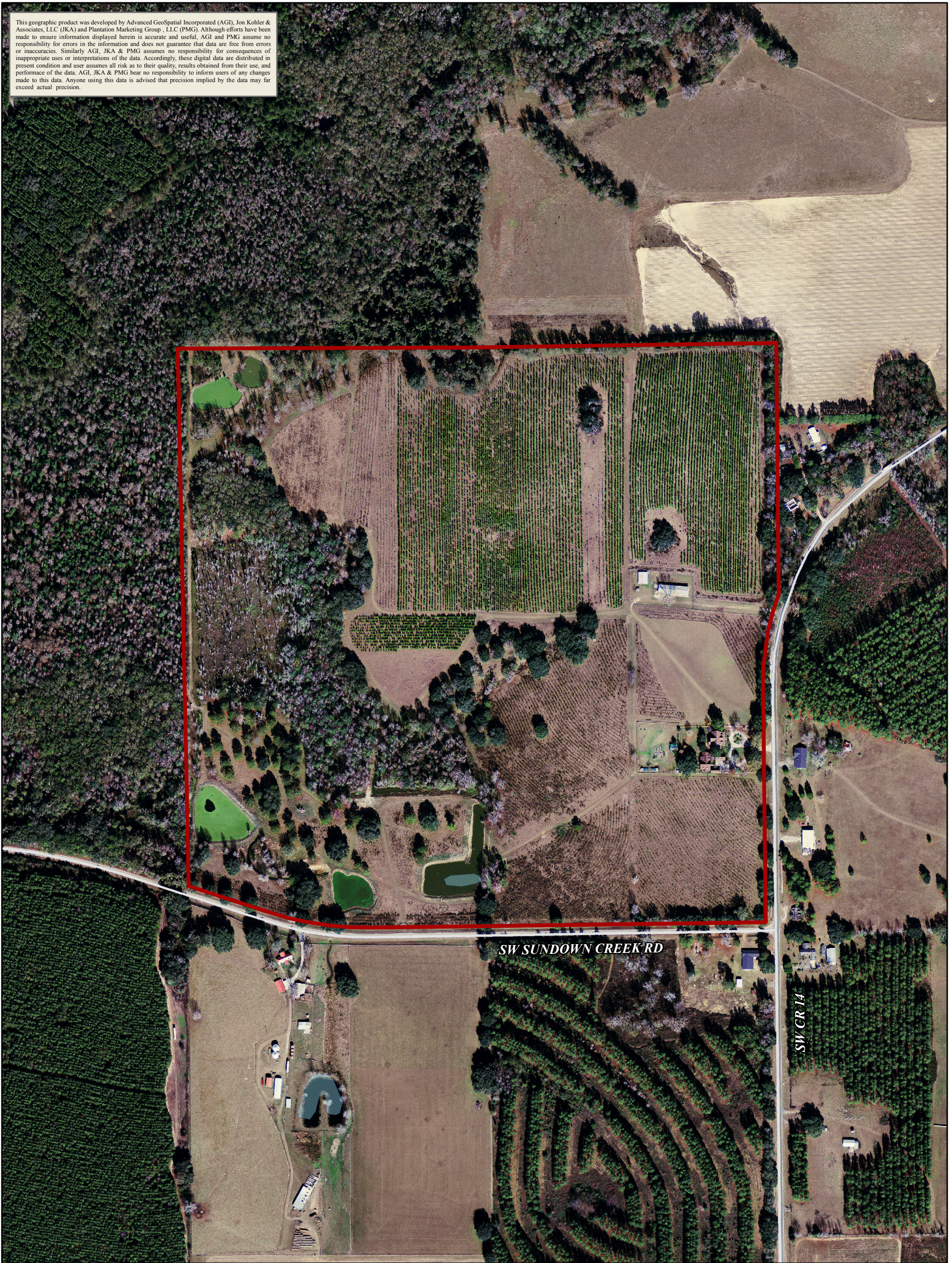


This geographic product was developed by Advanced GeoSpatial Incorporated (AGI), Jon Kohler & Associates, LLC (JKA) and Plantation Marketing Group, LLC (PMG). Although efforts have been made to ensure information displayed herein is accurate and useful, AGI and PMG assume no responsibility for errors in the information and does not guarantee that data are free from errors or inaccuracies. Similarly, AGI, JKA & PMG assumes no responsibility for consequences of inappropriate uses or interpretations of the data. Accordingly, these digital data are distributed in present condition and user assumes all risk as to their quality, results obtained from their use, and performance of the data. AGI, JKA & PMG bear no responsibility to inform users of any changes made to this data. Anyone using this data is advised that precision implied by the data may far exceed actual precision.



**JON KOHLER**  
 & ASSOCIATES, LLC  
 REAL ESTATE ADVISORS



© Jon Kohler & Associates, LLC  
 434 Mt. Olive Church Road, Lamont, FL 32336  
 Cell: 850.508.2999

This is a proprietary analysis and not to be distributed  
[www.JonKohler.com](http://www.JonKohler.com)

© 2014

**Jemia Ranch**  
 160 +/- acres  
 Madison County, Florida  
 2013 Aerial Imagery (1-foot)

- Jemia Ranch
- Madison Streets
- Lake/Pond

