

## Tour This Just-Listed Georgia Estate Modeled After Alexander Hamilton's Mansion

by Meghan Overdeep

Here's your chance to own one of South-Central Georgia's most iconic properties.

Located just minutes from downtown Thomaston, WaterCrest is a 740-acre estate featuring the Hightower House, regarded as one of the last great country houses built in America in the classical tradition

Modeled after Alexander Hamilton's Hamilton Grange Mansion and Thomas Jefferson's Monticello, no expense was spared in crafting this impressive 8,604-square-foot residence. Built by famed architect Philip Shutze in 1947, the home, which overlooks a beautiful 68-acre lake, was completely modernized in 2015.



### A Real Looker

*Hightower House is a beauty from all angles.*

Intricate woodwork, soaring 12-foot-ceilings, and a spacious music room with black-and-white marble flooring are the stars of the main house. But the 2,460-square-foot Lake House, with its theater room, concession kitchen, outdoor firepit, and covered boat slip, is certainly a star in its own right. The whole package

represents the best in luxe country living.

The property also includes a gym, bank vault, a gated brick entrance, two 800-square-foot guests houses, and acres of hunting ground. It's currently listed by Jon Kohler & Associates fro \$5,020,000. Join us for a tour?



### 1924 Crest Highway, Thomaston, Georgia

*Tuscan columns support the home's grand portico.*



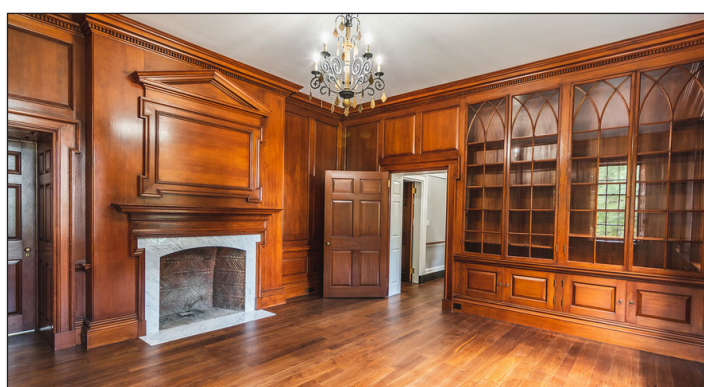
### Restored Glory

*The home's original three-quarter inch walnut flooring has been refinished throughout.*



### Exquisite Millwork

*Dentil molding highlights the impressive mantle on one of the home's numerous fireplaces.*



### Formal Study

*Rich wood paneling and more dentil molding create a regal feel in the study.*



**Modern Chef's Kitchen**

*Entertainers will appreciate the extensive kitchen updates, including Wolf stainless appliances, induction stove, walnut and quartzite counters with galley sink, and deadhead cypress beams.*



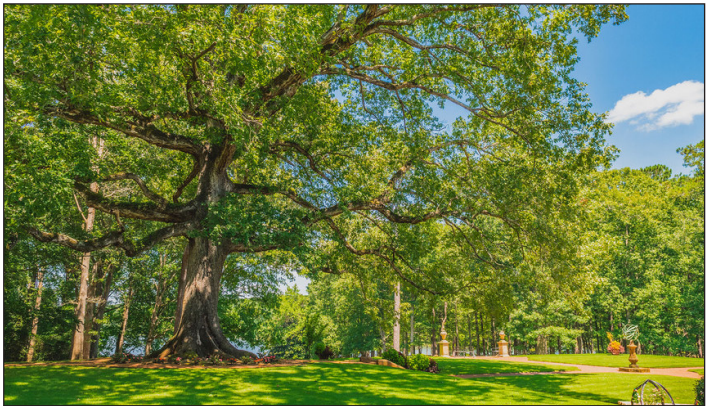
**Stylish Music Room**

*This room was originally an open porch, but Philip Shutze enclosed it for the homeowners in 1962.*



**Grand Staircase**

*An intricately carved U-shaped staircase leads from the main entrance to the home's second floor.*



**Lush Landscaping**

*The gated entrance leads through an oak and hardwood hammock to a circle drive featuring immaculate landscaping and views on the grounds.*



**Brick Garden**

*A sunken brick garden sits west of the main house.*



**Boat House**

*The boat house alone is the size of most people's homes. It boasts a covered boat slip with large fishing dock and floating swim spa, an outdoor shower, sauna, outdoor fire pit, grilling pit, covered fireplace, and plenty more.*



**Relaxation Station**

*The boat house's cozy den is the perfect spot to unwind after a day spent outside.*



**Boat House Theater**

*A boat house with its own theater? Yes, ma'am!*