

# This SC Plantation has 3,800 acres for Hunting and Can be Yours for \$16.1 million

An almost 3,800-acre plantation in Jasper County is waiting for a new owner who has \$16.1 million.

Slater Plantation, a hunter's dream, is nestled along the Coosawhatchie River in Ridgeland.



*Slater Plantation, Jon Kohler & Associates*

The buildings on the land include a two-story hunting lodge with three bedrooms and three baths, a large covered tractor shed, and a secondary pole barn.

The land is “jam packed with expansive upland pine forests and mature bottomland hardwood timber,” the listing says. The entrance has about 1,000 acres of upland quail woods that lead to the hunting lodge, which is surrounded by live oaks.

Deer, including 140-inch Boone and Crockett whitetails and a trophy whitetail herd, fill the property, making it ideal for hunting. Food plots and baiting sites are planted throughout the area alongside elevated box blinds.

The woods along the Coosawhatchie River are “very conducive for turkey hunting,” and include a 25-acre dove field surrounded by an 8-foot fence to protect crops.

The property also has a greentree reservoir, an area of forest that is flooded in the fall to create a sufficient wintering habitat for waterfowl.

Other than the 325 acres designated as a Gopher Tortoise Preserve with S.C. Department of Natural Resources, the plantation has no restrictions and no conservation easement.

Slater Plantation borders three other similar

properties: Buckfield Plantation, Mont Repose Plantation, and Cotton Hall Plantation. According to the listing, this makes for a “massive contiguous footprint of well-managed trophy whitetail, turkey, and quail hunting plantations.

Homes and communities with “plantation” in their name, especially those on Hilton Head Island, have come under scrutiny recently, a discussion revitalized by recent protests and rallies against racism and policy brutality. The debate over the use of the word has resulted in a petition for neighborhoods to stop using the term “plantation” in their names.

Nearly all the land on Hilton Head once had enslaved people working on plantation operations, according to recent reporting from The Island Packet.

South Carolina was established as an agricultural colony in 1670, and 50 years later, people of African descent made up two-thirds of the colony’s population, according to historical census data. The plantation system throughout Beaufort County made it one of the wealthiest areas in the United States.





*In 1861, nearly all of Hilton Head Island was covered by plantations worked by slaves, according to maps from The Heritage Library and Beaufort County historians. Today, all gated communities sit on pieces of land that once operated as plantations, although few still publicly use the name. A petition to remove the word “plantation” from community signage has garnered over 4,500 signatures. Island Packet staff graphic*

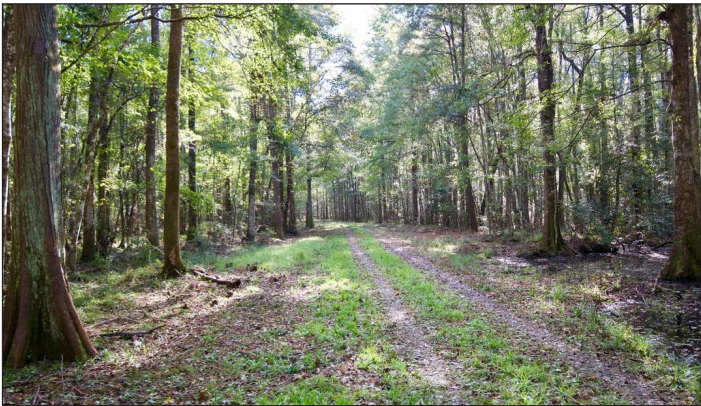
*Read more here: <https://www.islandpacket.com/article243793752.html#storylink=cpy>*



*Slater Plantation in Ridgeland SC, Jon Kohler & Associates*



*Jon Kohler & Associates*



*Slater Plantation in Jasper County, Jon Kohler & Associates*



*The main house on Tomotley Plantation, CJ Brown*