

- SURVEY -

OF 1.121 ACRE
LOCATED IN
LAND LOT 135
OF THE
13th LAND DISTRICT
THOMAS COUNTY, GEORGIA

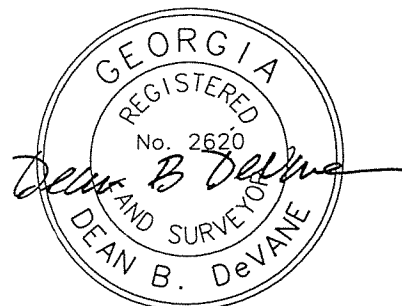
N/F
JANICE T. CURTIS
DB 846 PG 108

THESE BEARINGS HEREON HAVE BEEN CALCULATED FROM AN ACTUAL FIELD SURVEY AND ARE BASED UPON A PLAT OF SURVEY FOUND RECORDED IN PLAT CABINET 3, FOLIO 182-F.

THE PLATTED PROPERTY IS DESCRIBED BY THOMAS COUNTY TAX ASSESSORS AS TAX MAP 47, PARCEL 36 WHICH CAN BE FOUND DESCRIBED IN DEED BOOK 858, PAGE 83, AND PLAT CABINET 3, FOLIO 182-F OF RECORD IN THE OFFICE OF THE CLERK OF COURT, THOMAS COUNTY, GEORGIA.

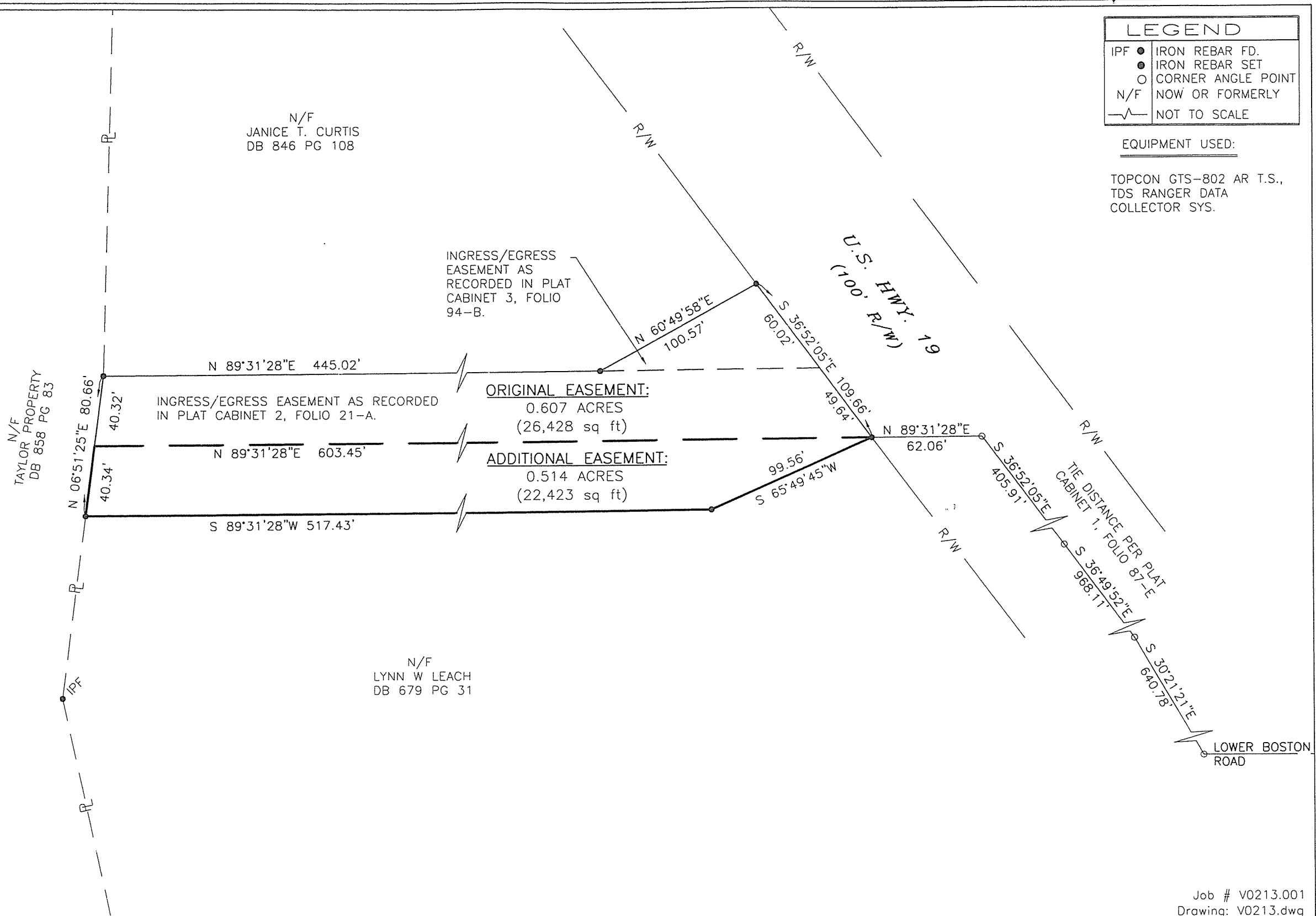
I HEREBY CERTIFY THAT ALL MEASUREMENTS ARE CORRECT AND WERE PREPARED FROM AN ACTUAL FIELD SURVEY UNDER MY SUPERVISION; THE FIELD DATA UPON WHICH THIS PLAT IS BASED HAS BEEN BASED UPON AN OPEN LOOP TRAVERSE AND NO ADJUSTMENT HAS BEEN PERFORMED. THIS PLAT HAS BEEN CALCULATED FOR CLOSURE, AND IS ACCURATE WITHIN 1 FOOT IN 100,000 FEET.

Dean B. DeVane 11-27-07
DEAN B. DeVANE GA. R.L.S. #2620



LEGEND	
IPF ●	IRON REBAR FD.
●	IRON REBAR SET
○	CORNER ANGLE POINT
N/F	NOW OR FORMERLY
—	NOT TO SCALE

EQUIPMENT USED:
TOPCON GTS-802 AR T.S.,
TDS RANGER DATA
COLLECTOR SYS.



N/F
LYNN W LEACH
DB 679 PG 31

Job # V0213.001
Drawing: V0213.dwg

Allen Nobles & Associates, Inc.

TALLAHASSEE • CHIPLEY • DESTIN • PENSACOLA • VALDOSTA
PROFESSIONAL LAND SURVEYING, MAPPING, AND CIVIL ENGINEERING
106 JORDAN STREET, VALDOSTA, GA. 31601 PH: 229-253-8080 FAX: 229-249-8027

SURVEY FOR:
JOHN LEWIS TAYLOR, JR.
& RAYNER T. TAYLOR
27 NOVEMBER 2007

