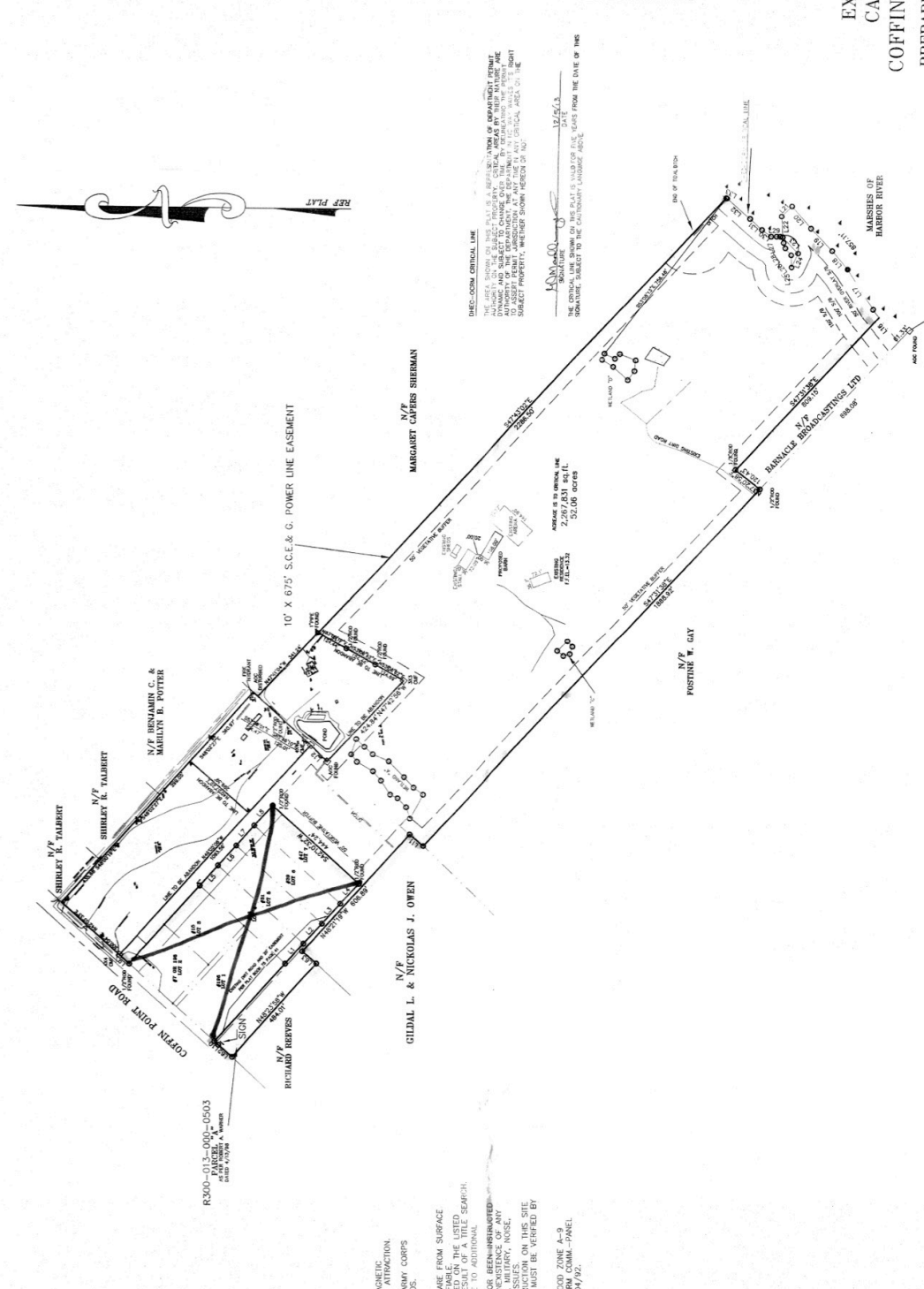




LOCATION MAP (N.T.S.)



LINE	LINE TYPE	BEARING	DISTANCE
1	1	S 89° 52' 00" W	500.00
2	1	S 89° 52' 00" W	500.00
3	1	S 89° 52' 00" W	500.00
4	1	S 89° 52' 00" W	500.00
5	1	S 89° 52' 00" W	500.00
6	1	S 89° 52' 00" W	500.00
7	1	S 89° 52' 00" W	500.00
8	1	S 89° 52' 00" W	500.00
9	1	S 89° 52' 00" W	500.00
10	1	S 89° 52' 00" W	500.00
11	1	S 89° 52' 00" W	500.00
12	1	S 89° 52' 00" W	500.00
13	1	S 89° 52' 00" W	500.00
14	1	S 89° 52' 00" W	500.00
15	1	S 89° 52' 00" W	500.00
16	1	S 89° 52' 00" W	500.00
17	1	S 89° 52' 00" W	500.00
18	1	S 89° 52' 00" W	500.00
19	1	S 89° 52' 00" W	500.00
20	1	S 89° 52' 00" W	500.00
21	1	S 89° 52' 00" W	500.00
22	1	S 89° 52' 00" W	500.00
23	1	S 89° 52' 00" W	500.00
24	1	S 89° 52' 00" W	500.00
25	1	S 89° 52' 00" W	500.00
26	1	S 89° 52' 00" W	500.00
27	1	S 89° 52' 00" W	500.00
28	1	S 89° 52' 00" W	500.00
29	1	S 89° 52' 00" W	500.00
30	1	S 89° 52' 00" W	500.00
31	1	S 89° 52' 00" W	500.00
32	1	S 89° 52' 00" W	500.00
33	1	S 89° 52' 00" W	500.00
34	1	S 89° 52' 00" W	500.00
35	1	S 89° 52' 00" W	500.00
36	1	S 89° 52' 00" W	500.00
37	1	S 89° 52' 00" W	500.00
38	1	S 89° 52' 00" W	500.00
39	1	S 89° 52' 00" W	500.00
40	1	S 89° 52' 00" W	500.00
41	1	S 89° 52' 00" W	500.00
42	1	S 89° 52' 00" W	500.00
43	1	S 89° 52' 00" W	500.00
44	1	S 89° 52' 00" W	500.00
45	1	S 89° 52' 00" W	500.00
46	1	S 89° 52' 00" W	500.00
47	1	S 89° 52' 00" W	500.00
48	1	S 89° 52' 00" W	500.00
49	1	S 89° 52' 00" W	500.00
50	1	S 89° 52' 00" W	500.00
51	1	S 89° 52' 00" W	500.00
52	1	S 89° 52' 00" W	500.00
53	1	S 89° 52' 00" W	500.00
54	1	S 89° 52' 00" W	500.00
55	1	S 89° 52' 00" W	500.00
56	1	S 89° 52' 00" W	500.00
57	1	S 89° 52' 00" W	500.00
58	1	S 89° 52' 00" W	500.00
59	1	S 89° 52' 00" W	500.00
60	1	S 89° 52' 00" W	500.00
61	1	S 89° 52' 00" W	500.00
62	1	S 89° 52' 00" W	500.00
63	1	S 89° 52' 00" W	500.00
64	1	S 89° 52' 00" W	500.00
65	1	S 89° 52' 00" W	500.00
66	1	S 89° 52' 00" W	500.00
67	1	S 89° 52' 00" W	500.00
68	1	S 89° 52' 00" W	500.00
69	1	S 89° 52' 00" W	500.00
70	1	S 89° 52' 00" W	500.00
71	1	S 89° 52' 00" W	500.00
72	1	S 89° 52' 00" W	500.00
73	1	S 89° 52' 00" W	500.00
74	1	S 89° 52' 00" W	500.00
75	1	S 89° 52' 00" W	500.00
76	1	S 89° 52' 00" W	500.00
77	1	S 89° 52' 00" W	500.00
78	1	S 89° 52' 00" W	500.00
79	1	S 89° 52' 00" W	500.00
80	1	S 89° 52' 00" W	500.00
81	1	S 89° 52' 00" W	500.00
82	1	S 89° 52' 00" W	500.00
83	1	S 89° 52' 00" W	500.00
84	1	S 89° 52' 00" W	500.00
85	1	S 89° 52' 00" W	500.00
86	1	S 89° 52' 00" W	500.00
87	1	S 89° 52' 00" W	500.00
88	1	S 89° 52' 00" W	500.00
89	1	S 89° 52' 00" W	500.00
90	1	S 89° 52' 00" W	500.00
91	1	S 89° 52' 00" W	500.00
92	1	S 89° 52' 00" W	500.00
93	1	S 89° 52' 00" W	500.00
94	1	S 89° 52' 00" W	500.00
95	1	S 89° 52' 00" W	500.00
96	1	S 89° 52' 00" W	500.00
97	1	S 89° 52' 00" W	500.00
98	1	S 89° 52' 00" W	500.00
99	1	S 89° 52' 00" W	500.00
100	1	S 89° 52' 00" W	500.00

KEEP FLAT

THE AREA SHOWN ON THIS PLAN IS A REPRESENTATION OF INFORMATION REPORT DYNAMIC AND SUBJECT TO CHANGE DUE TO THE DYNAMIC NATURE OF THE SURVEYING PROCESS AND SUBJECT TO ASSET FIRM JURISDICTION AT ANY TIME AND UNDER ANY CIRCUMSTANCES. THE SURVEYOR'S LIABILITY IS LIMITED TO THE INFORMATION PROVIDED HEREON AND NOT TO THE ACCURACY OF THE DATA.

THE CRITICAL LINE SHOWN ON THIS PLAN IS VALID FOR FILE WORK FROM THE DATE OF THIS SURVEY, SUBJECT TO THE CAUTIONARY LANGUAGE ABOVE.

10' X 67.5' S.C.E. & G. POWER LINE EASEMENT

MARGARET CAVENS SHERMAN

N/P SHIRLEY R. TALBERT

N/P RICHARD REEVES

GILDAL L. & NICKOLAS J. OWEN

N/P FOSTINE W. GAY

RANNICLE INVESTMENTS LTD

MARSHES OF HARBOR RIVER

GRAPHIC SCALE
1 inch = 200 ft.

SCALE: 1" = 200'

DATE: 9/10/2013

JOB #4909 F.B. #14/14 DRAWN BY: DESIGN 5

EXHIBIT MAP
CAMELOT FARMS
COFFIN POINT PLANTATION
PREPARED FOR: MARK KENNEDY
ST. HELENA ISLAND
BEAUFORT COUNTY, SOUTH CAROLINA.

NOTES:
1) THE BOUNDS SHOWN HEREON ARE MAGNETIC AND AS SUCH ARE SUBJECT TO LOCAL ATTRACTION.
2) THIS PLAT DOES NOT CERTIFY OF U.S. ARMY CORPS OF ENGINEERS JURISDICTIONAL WETLANDS.
3) OR COORDINATE METHOD.
4) LOCATION OF UNDERGROUND UTILITIES ARE FROM SURFACE DATA.
5) THIS PLAT REPRESENTS A SURVEY BASED ON THE LISTED CERTIFICATES AND NOT TRANSFERABLE TO ADDITIONAL CERTIFICATES.
6) THE CENTER HAS NOT BEEN INVESTIGATED OR BEEN INSUREDED.
7) INVESTIGATE THE DISTANCE OR NONEXISTENCE OF ANY ADJACENT PROPERTY OR ENVIRONMENTAL ISSUES.
8) BEFORE ANY DESIGN WORK OR CONSTRUCTION ON THIS SITE BEGINS, THE SURVEYOR MUST BE VERIFIED BY BEAUFORT COUNTY BUILDING CODES.
9) (CL 1400) AS DETERMINED BY FEMA FIRM COMM-PANEL (INDEX DATED: 1/18/92). DATED: 11/04/92.

REFERENCES:
1) R 300-013-000-0124.
2) PLAT BY 2770 AS REVISED.
3) PLAT BOOK 09, PAGE 5.
4) BEAUFORT COUNTY PUBLIC OFFICE.

GASQUE & ASSOCIATES INC.
LAND SURVEYORS & PLANNERS
28 PROFESSIONAL VILLAGE CIRCLE, BEAUFORT, S.C.
P.O. BOX 1363, BEAUFORT, S.C. (843) 552-1795

THIS PLAT IS COMPILED AND IS ONLY INTENDED FOR THE USE OF THE CLIENT (RESPONSIBLE PARTY) AND NOT FOR ANY OTHER PURPOSE.