

Stewardship

MAGAZINE



LANDLEADER
FARM, RANCH & RECREATIONAL REAL ESTATE

**Rural America
Welcomes You**

JON
KOHLER
& ASSOCIATES



AT LANDLEADER, WE ARE STEWARDS OF THE LAND, FIRST.

After that, we are the leading farm, ranch and recreational real estate marketing company in North America. It is our duty and honor to represent the finest land, farm, ranch and recreational real estate brokerages in America. It is these superior brokerages that represent the faithful land stewards in our amazing nation.

Owned by member brokerages, the LandLeader family consists of the industry's most proven companies in their respective markets. Our member brokerages are made up of professional agents who live and know the land and lifestyle they sell - true STEWARDS by definition.

LandLeader prides itself on being experts in the real estate marketing realm, as we stand behind our mission of providing land and property owners with exceptional service and incomparable integrity.

We are a large network of experienced brokers and agents who work together to deliver an exceptional real estate experience that is second to none.

With industry leading innovation, technology and marketing strategies backed by data you can trust, your family of LandLeader brokerages are poised to deliver the results you deserve.

TRUST YOUR GREATEST ASSET TO THE LANDLEADER FAMILY OF EXPERT PROFESSIONALS.

INNOVATION, MOTIVATION, MARKETING, TECHNOLOGY

CORDER & ASSOCIATES, LLC
Licensed in MT, WY & CO
(833) 783-3224 | corderland.com

AMERICAN LAND BROKERS
Licensed in CO, KS, NE, SD & WY
(970) 818-1900 | americanlandbroker.com

CALIFORNIA OUTDOOR PROPERTIES, INC.
Licensed in CA
(707) 455-4444 | caoutdoorproperties.com

MAINE OUTDOOR PROPERTIES TEAM AT REALTY OF MAINE
Licensed in ME
(207) 852-7577 | maineoutdoorproperties.net

JON KOHLER & ASSOCIATES, LLC.
Licensed in AL, FL, GA, MS & SC
(850) 508-2999 | jonkohler.com

LAND AND WILDLIFE
Licensed in AK, ID, OR & WA
(866) 559-3478 | landandwildlife.com

GREAT LAKES AND LAND REAL ESTATE COMPANY, INC.
Licensed in MI & WI
(906) 524-6288 | greatlakesandland.com

LIVING THE DREAM OUTDOOR PROPERTIES
Licensed in AR, KS, KY, IL & MO
(855) 289-334784 | livingthedreamland.com

PREFERRED PROPERTIES
Licensed in NH & VT
(800) 557-8186 | preferredpropertiesvt.com

DAKOTA PLAINS REALTY, LLC
Licensed in MN & ND
(701) 566-7080 | dakotaplainsrealty.com

TIMBERLAND REALTY
Licensed in NY, PA & WV
(716) 962-9935 | timberlandrealty.net

OUTDOOR PROPERTIES OF NEVADA
Licensed in NV
(775) 455-0225 | outdoorpropertiesofnevada.com

©2021 The LandLeader, LLC. All rights reserved. No portion of this publication may be duplicated, in whole or in part, without written consent of The LandLeader, LLC. LandLeader logos are actively under trademark protection. All pictures, descriptions, maps, or other details about properties shown in this publication are property of the individual brokerage members and not associated with the The LandLeader, LLC. Every effort has been made to ensure the accuracy of the information contained in this publication, but not guaranteed. Please contact an independent LandLeader brokerage member, or visit LandLeader.com for up-to-date information on list price and property availability.

LandLeader Stewardship Magazine 2021 designed by Designgenix/Sarah Linn; Marketing@LandLeader.com



MEET LANDLEADER'S BOARD OF DIRECTORS & LEADERSHIP TEAM

Our Leadership team is composed of the most experienced, distinguished and reputable brokers from across the United States - border to border, and coast to coast.

Our team of highly skilled professionals are ready to expand into new regions by offering an unmatched level of service for their brokers, buyers, sellers, strategic partners and sponsors. At LandLeader, your voice is heard.



Jon Kohler

LandLeader Board Member
Owner/Broker of
Jon Kohler and Associates in the
Southeast Region of the United States



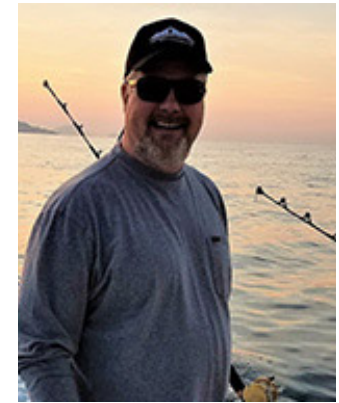
Todd Renfrew

LandLeader Board Member
Owner/Broker of California Outdoor
Properties and
Outdoor Properties of Nevada



Garrett Zoller

LandLeader Broker of Record
Co-owner/Broker of Land and Wildlife
in Alaska, Idaho, Oregon
and Washington



Tim O'Neil

LandLeader Board Member
Co-owner/Broker of Land and Wildlife
in the Northwest Region of the United
States including Alaska



Brian Bullard

LandLeader Board Member
Owner/Broker of Timberland Realty
in New York, West Virginia
and Pennsylvania



Tim Keohane

LandLeader Board Member
Owner/Broker of Great Lakes and
Land Real Estate Company in
Michigan and Wisconsin



D.W. Hindman

LandLeader Board Member
Owner/Broker of Living The Dream
Outdoor Properties in Arkansas,
Kansas, Kentucky and Missouri



Curtis Trousdale

LandLeader Board Member
Owner/Broker of Preferred
Properties in Vermont and
New Hampshire



Cane Mill Plantation

\$15,073,750 | 3,890 Acres
Dougherty County, GA

Presented By:

JON KOHLER (850) 508-2999

Cane Mill Plantation is a 3,890 +/- acre historic wild quail plantation located in the heart of one the most prolific wild quail regions in America. It and its immediate 7 neighbors control 35,000 +/- contiguous acres in the middle of the “best of the best” of the 300,000+ acre famed “Albany Quail Plantation Belt.”

- Herbert Stoddard, the “father of bobwhite management,” personally directed the installation of the brood fields at Cane Mill that are still benefitting quail populations today.
- Three record bucks harvested in 2020, one scoring 169 & another at 172 B&C!
- 160 +/- acres Irrigated farmland & Dryland 416 total dryland farm.
- 400 +/- acres of small brood fields.
- Main Lodge, Managers House, Two additional houses, Stable, Kennel, and Barns.





Jon Kohler & Associates

434 SW MT Olive Church Road, Lamont, FL 32336
(850) 508-2999



“Kohler’s group ‘does amazing storytelling to bring to life the history and culture of these properties. It is a very rare skill set.’”

– Kevin McGorty, director of the Tall Timbers Land Conservancy

Jon Kohler & Associates is a brokerage and marketing firm that specializes in representing only the finest quail plantations, ranches, and high-quality recreational properties in the Southeast. Since 2010 alone, we have closed 253,000+ acres, totaling upwards of \$884,000,000 in sales. With a business model unlike other brokerages – one based on client advocacy – we place an extreme emphasis on national and international marketing and due diligence specialization.

With a servant’s heart, Jon Kohler & Associates, started with a passion for natural places and to show they should be in a market by themselves. Jon Kohler & Associates is the leading authority on hunting plantations, ranches, and high-quality properties representing the best land stewards in the Southeast. With almost three decades specializing in this niche, our real estate brokerage, marketing, and advisor firm is best known as the preeminent source of knowledge of high-quality land, for our unmatched marketing, and for representing the top properties in this niche. Our unique philosophy about these unique properties is that they are in an asset class by themselves. We are more than a traditional broker; our primary focus is to ensure good land stewardship is financially rewarded.

Owning these unique properties is more than simply buying land. It’s a lifestyle; it’s a part of one’s legacy, one’s soul and it’s oftentimes the most cherished investment one can make in their lifetime. Whether it’s helping find that perfect place or finding the perfect buyer, when the time is right our firm is unique in that our purpose is to be the servant leaders in this niche.



Quail Creek Plantation

\$7,750,000 | 1,726 Acres | Nassau County, FL

- One of the largest high-fenced properties in North FL.
- Main House, 4,325 Sq Ft 7BR/7.5 BA.
- 10-acre lake, 4 main house, guest cabin, kennel, & more.

Presented By: **JON KOHLER (850) 508-2999 & LORI WELDON (229) 977-6065**



Lake Hatchineha Ranch

\$7,612,543 | 1,620 Acres | Polk County, FL

- One of the finest trophy ranches and Social Storm® properties in Central Florida.
- Bordered on three sides by conservation land.
- One of the best remaining examples of Central Florida's once pristine ecosystem.

Presented By: **JON KOHLER (850) 508-2999**



Double Barrel Ranch at The Oaks

\$4,995,000 | 140 Acres | Columbia County, FL

- Located in one of the top equestrian neighborhoods in the Southeast.
- 12,969 +/- sq. ft. main house, 6 bedroom, 6 full bath, 2 half bath.
- Pastoral property with far and away one of the finest homes in North FL.

Presented By: **JON KOHLER (850) 508-2999**



Ten C's Plantation

\$1,995,000 | 598 Acres | Madison County, FL

- High quality recreational property with 1.75 acre Pond.
- 3,470 sq.ft. ranch house, 5BR/3BA with outdoor area.
- Located on arguably one of the most scenic areas of North FL.

Presented By: **JON KOHLER (850) 508-2999**

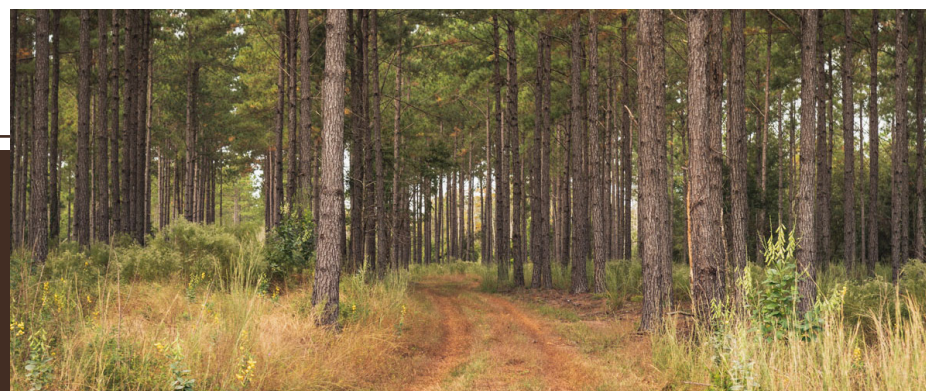


Pittman Ranch

\$3,000,000 | 196 Acres | Washington County, FL

- One of the finest horse ranches in North Florida.
- 4,020 sq. ft. main house, 4 bedrooms, 3.5 bathrooms.
- Barns, Ponds, Pine timberland, and more.

Presented By: **JON KOHLER (850) 508-2999**



Arrowhead Forest

\$2,348,000 | 1,174 Acres | Madison County, FL

- Numerous natural duck ponds and a creek.
- High Deer and Turkey populations with coveys of Wild Quail.
- Has more timber income than a typical recreational property.

Presented By: **JON KOHLER (850) 508-2999**

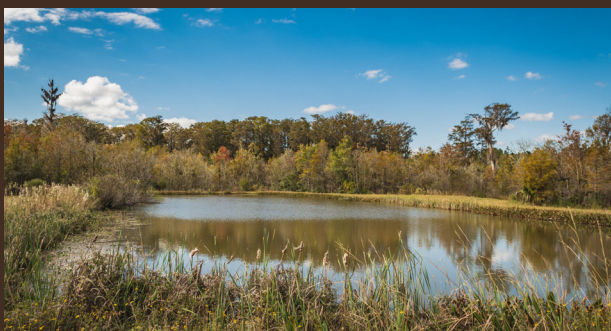


Turkey Ridge

\$705,000 | 393 Acres | Jackson County, FL

- Beautiful hardwood ravines with mixed pine.
- Nice stands of longleaf pines and native wiregrass.
- Areas of gorgeous hardwood creek drains.
- 190 acres of slash pine planted in 2004.

Presented By: **WALTER HATCHETT (850) 508-4564**



Fairway Forest

\$1,250,000 | 460 Acres | Taylor County, FL

- A Good Social Storm[®] Property.
- Great hunting, massive amounts of timber, ponds, surrounded by large landowner.
- Lodge, bunkhouse, and barns.

Presented By: **JON KOHLER (850) 508-2999**



Red Rooster Farms

\$1,195,000 | 427.29 Acres | Glynn County, GA

- Income producing recreational property.
- Loaded with timber and hardwoods.
- Has great deer, turkey and duck hunting.
- Equestrian facilities for the avid rider.

Presented By: **LORI WELDON (229) 977-6065**

POWERED BY LANDLEADER.COM



Thomas Hall

\$6,400,000 | 124.8 Acres | Charleston County, SC

- Private waterfront Mini-Plantation featuring a world-class custom home.
- 7,300± sq. ft. custom home, 6 bedrooms and 6 bathrooms.
- Located less than 15 min to Charleston.

Presented By: JON KOHLER (850) 508-2999

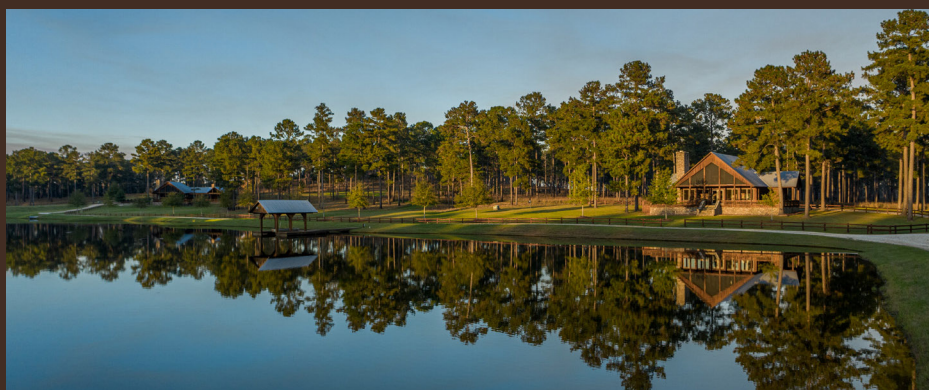


Three Notch

\$17,500,000 | 6,930 Acres | Bullock County, AL

- Largest Wild Quail Plantation available on the market in the SE.
- Well above the average amount of timber for a shooting plantation.
- Ponds, lodge, 6 established quail courses and more.

Presented By: JON KOHLER (850) 508-2999



Bishop Hill Plantation

\$6,372,800 | 1,726 Acres | Barbour County, AL

- One of the Top Three Sporting Plantations in the State of Alabama!
- World Class Amenities.
- Offered completely turn-Key with furniture, tractors, equipment, horses, etc.

Presented By: TIM JAMES JR. (334) 652-4517



Magnolia Ridge

\$5,800,000 | 993.6 Acres | Grady County, GA

- High quality Red Hills recreational plantation.
- Approx 1.4 miles on the Ochlockonee River.
- Managed for quail, turkey, deer, and ducks. Good wild bird population.

Presented By: WALTER HATCHETT (850) 508-4564

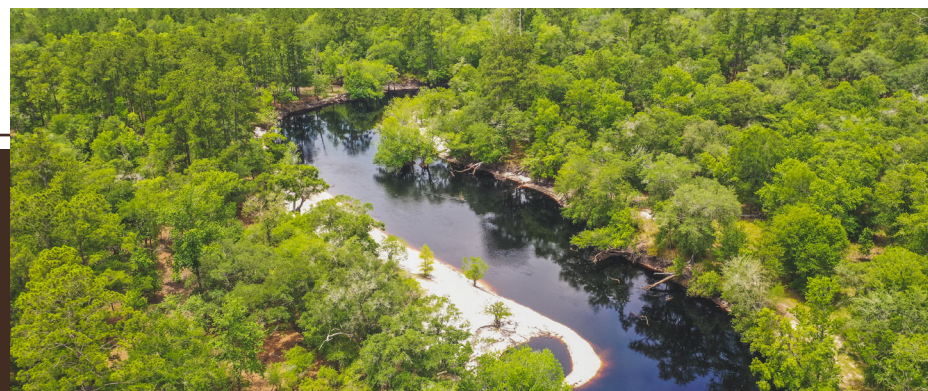


Oak Ridge Farm

\$475,000 | 50 Acres | Jefferson County, FL

- Located in the heart of the Red Hills.
- Bordered some of the finest wild quail hunting plantations in the South.
- Rolling pastures & 100% fenced horse farm with adequate shade for livestock.

Presented By: LORI WELDON (229) 977-6065 & WALTER HATCHETT (850) 508-4564



Suwannee River Place

\$3,799,831 | 1,490.13 Acres | Echols County, GA

- Riverfront recreational property.
- 2± Miles Frontage on the World-Famous Suwannee River.
- Untouched river front hardwoods, highly productive, intensively managed pine stands.

Presented By: JON KOHLER (850) 508-2999 & LORI WELDON (229) 977-6065



5 K Ranch

\$1,280,000 | 320 Acres | Turner County, GA

- High-quality recreational property managed for turkey and deer.
- .28 +/- miles of frontage on Clear Creek.
- 5-acre lake and small pond.

Presented By: WALTER HATCHETT (850) 508-4564

BRETT BRYAN (850) 556-4362

48 | LANDLEADER.COM



Buena Vista

\$1,017,000 | 452 Acres | Monroe County, AL

- Excellent deer & turkey hunting.
- 9 large food plots already in place.
- Mix pine and hardwood timber & pine plantation.
- Great timber investment.

Presented By: TIM JAMES JR. (334) 652-4517



Clansy Creek West

\$698,000 | 406 Acres | Crenshaw County, AL

- Mature hardwood timber along the Patsaliga Creek Basin.
- Excellent deer hunting with mature bucks.
- Multiple duck ponds. Great fishing.
- 2 miles of frontage on Patsaliga Creek.

Presented By: TIM JAMES JR. (334) 652-4517

APEX 2020 AWARD WINNERS!

The prestigious RLI APEX Awards Program, sponsored by The Land Report, is an annual production awards program designed to recognize the excellence and performance of the RLI members – the best in the business – with these prestigious land real estate production awards. Winners of the annual APEX Awards are recognized at a special awards ceremony at the annual National Land Conference.

CONGRATULATIONS TO:

Todd Renfrew with California Outdoor Properties for winning the APEX 2020 National Broker of the Year Award.

D.W. Hindman with Living The Dream for winning the APEX 2020 Top Twenty National Producer Award.

Walter Hatchett with Jon Kohler & Associates for winning the APEX 2020 Top Twenty National Producer Award.

