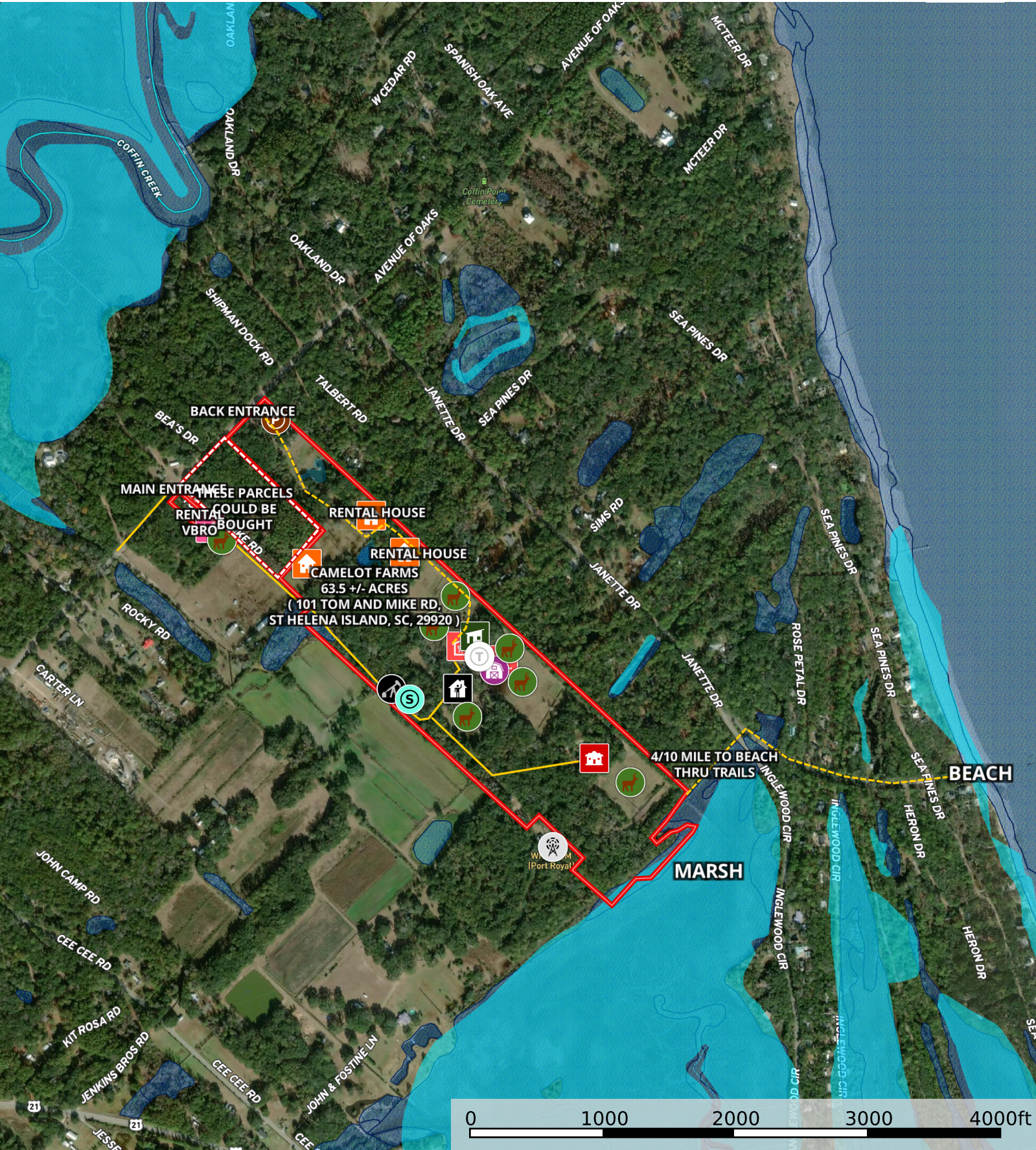


Camelot Farms Equestrian Center - Wetlands/Water  
Beaufort County, South Carolina, 63.5 AC +/-



- |                      |             |                   |             |                |                |                       |          |                  |                          |
|----------------------|-------------|-------------------|-------------|----------------|----------------|-----------------------|----------|------------------|--------------------------|
| Horse Stall          | Main House  | Covered Riding    | Barn Office | Barn Manager's | Dressage Arena | VBRO Cabin Saddle Pad | Paddocks | Shed - Tools and | Pole Barn / Trailers and |
| Campground - 6-8     | Bath House  | Homeland Security | Boundary    | Boundary       | Road / Trail   | Primary Road          | Wetlands | Riparian         |                          |
| Stream, Intermittent | River/Creek | Water Body        |             |                |                |                       |          |                  |                          |