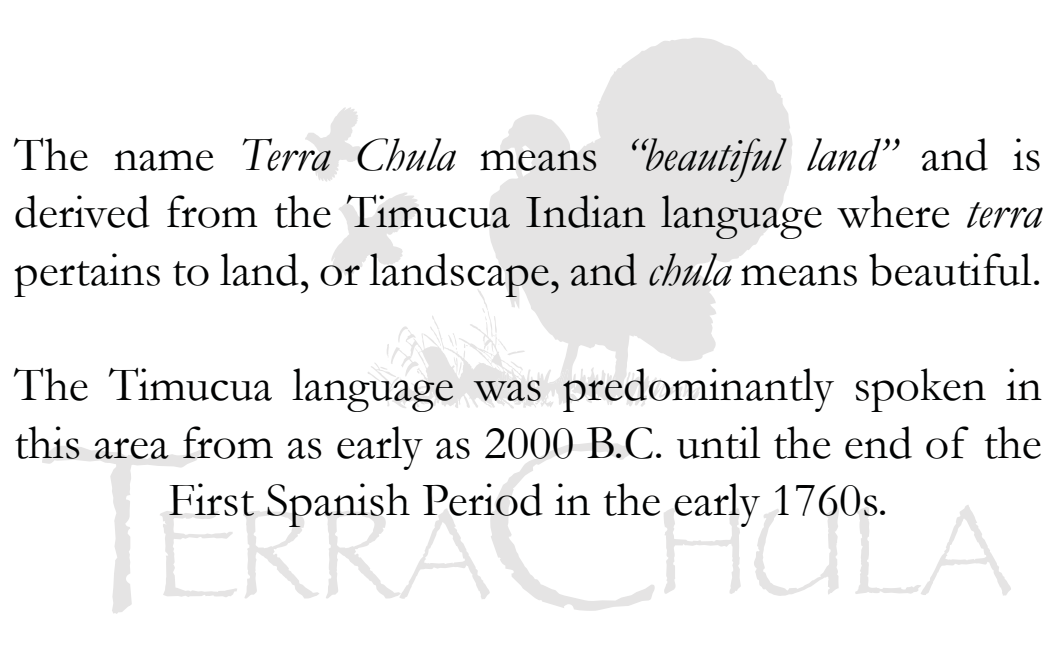


T E R R A C H U L A

A S p o r t i n g P l a n t a t i o n





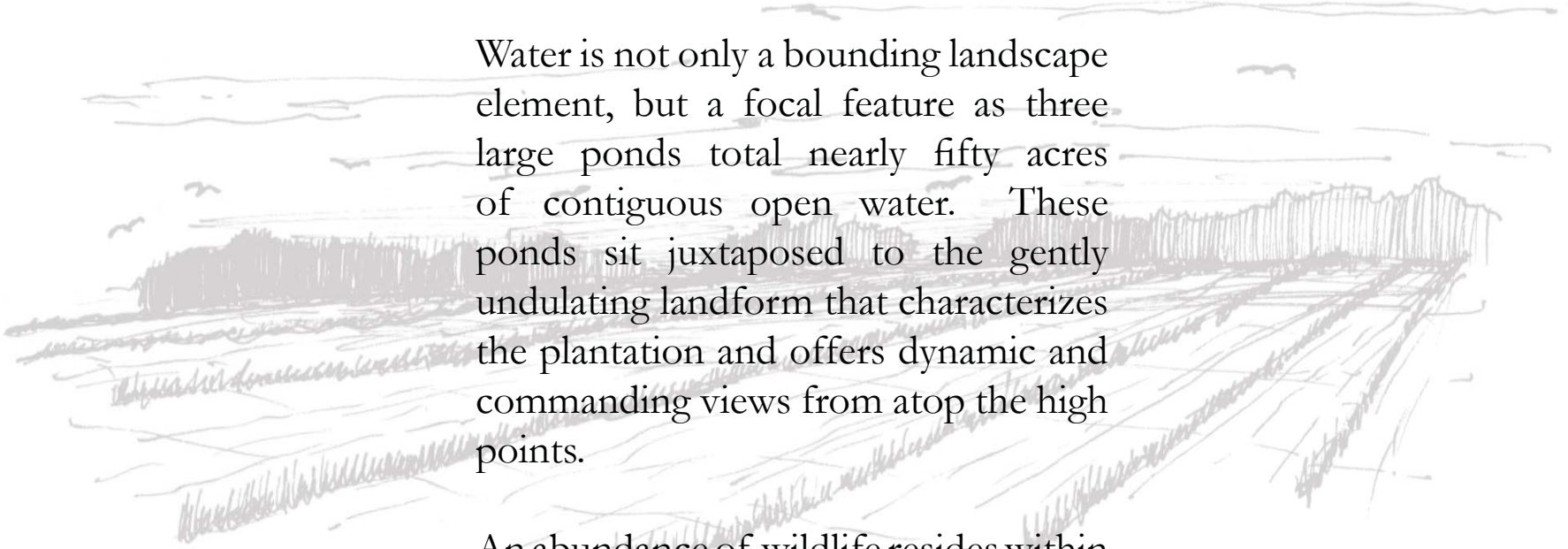


The name *Terra Chula* means “*beautiful land*” and is derived from the Timucua Indian language where *terra* pertains to land, or landscape, and *chula* means beautiful.

The Timucua language was predominantly spoken in this area from as early as 2000 B.C. until the end of the First Spanish Period in the early 1760s.

THE SITE

Terra Chula plantation is located in southern Georgia and encompasses nearly 2000 acres in Brooks County. The plantation sits in the heart of the quail-hunting belt of southern Georgia and is comprised of open agricultural fields, mature live oak groves, slash and long leaf pine stands, mature bald cypress stands and mixed hardwood forests along the property's northern border of Piscola Creek.



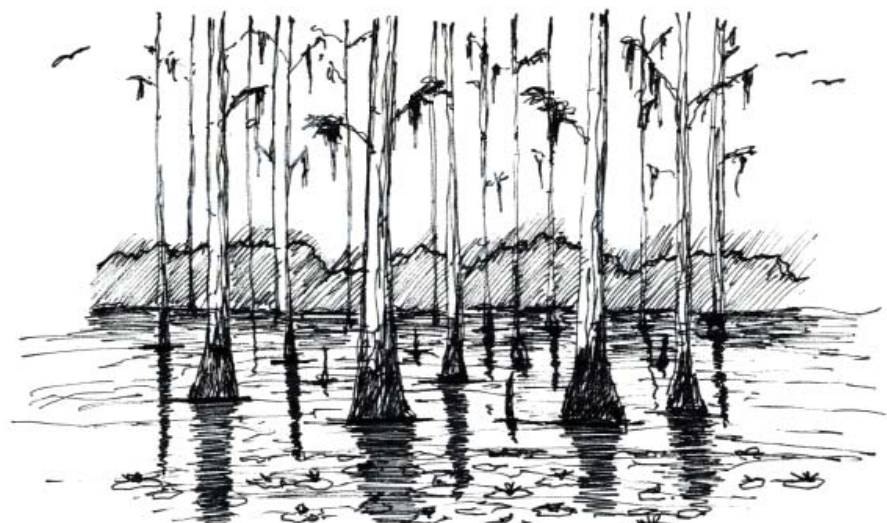
Water is not only a bounding landscape element, but a focal feature as three large ponds total nearly fifty acres of contiguous open water. These ponds sit juxtaposed to the gently undulating landform that characterizes the plantation and offers dynamic and commanding views from atop the high points.

An abundance of wildlife resides within the acreage of Terra Chula - including, but not limited to, alligators, white tail deer, eastern wild turkey, dove, quail, duck species and a host of other non-game animals and fowl.

This rich diversity of landform, plant and animal life, and dynamic water features set the stage for creating a memorable plantation experience that possesses a permanence only achieved through meticulous and careful thoughtfulness and planning.



sketch of pine stand and native wire grasses



sketch of cypress pond



sketch of live oak allee



existing site images

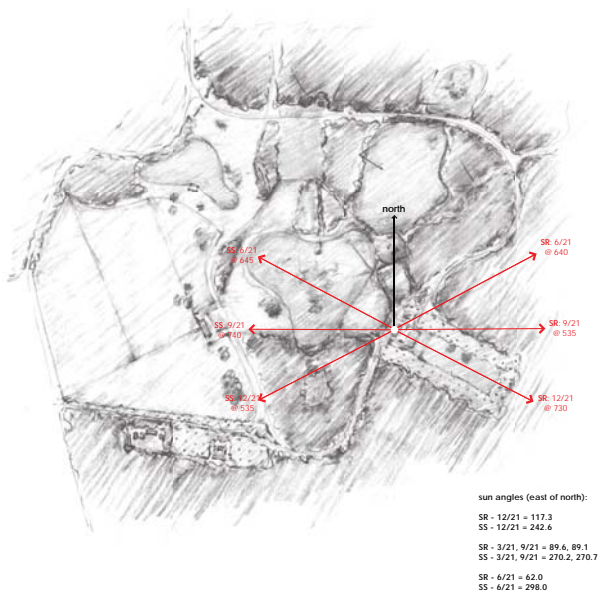
PROPERTY VISION

The vision for Terra Chula is to create a multi-functional retreat for hunting, wildlife viewing and family recreation with the flexibility to sell shares to future investors. Hunting on the plantation is focused primarily on quail, but also includes deer, duck, dove, rabbit and turkey. The tactical siting of the plantation's operational facilities carefully considered a multi-layered trail system that interweaves those elements with the hunting grounds, recreational facilities and lodge site. The programmatic elements include:

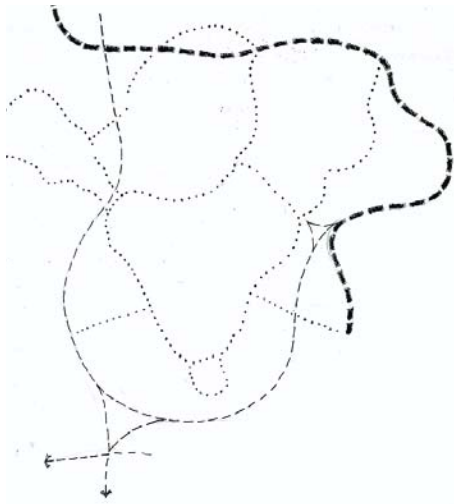
- **lodge**
- **equestrian facility**
- **sporting clays course**
- **quail habitat**
- **entry gate + drive**
- **maintenance barn + dog kennels**
- **manager's home**
- **future home sites**
- **pond enhancement**
- **boat + oyster house**
- **trail system**
- **fencing**

These elements are positioned around the largest of three cypress ponds, making this dynamic body of water the focal point for the heart of the plantation. The lodge is located at the highest point on the property, taking advantage of sunset views across the water, while taking in the equestrian facility and shooting tower. The equestrian facility is in view of the lodge and also has long views across open water. The sporting clay course is sited around the ponds providing a diverse shooting experience.

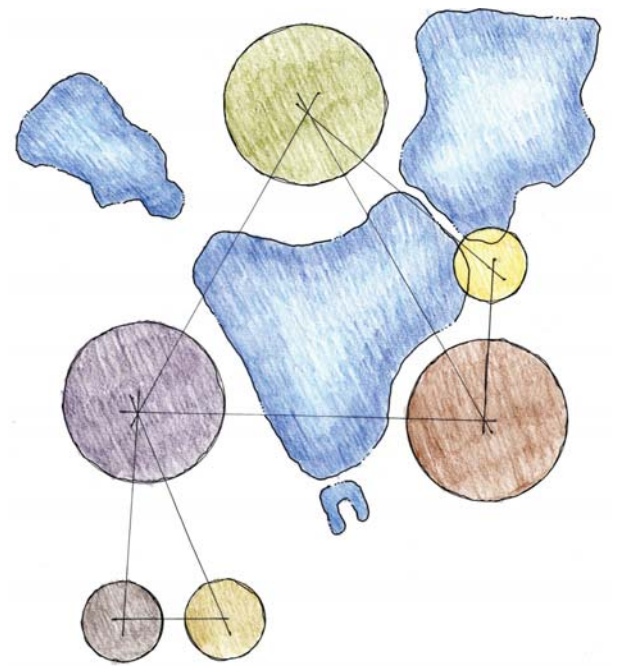
Although the destinations are spectacular, the journeys between these places are just as memorable and exciting, as paths and roads make their way across causeways, between the cypress ponds, and through cathedral-like allees of live oaks and pine stands.



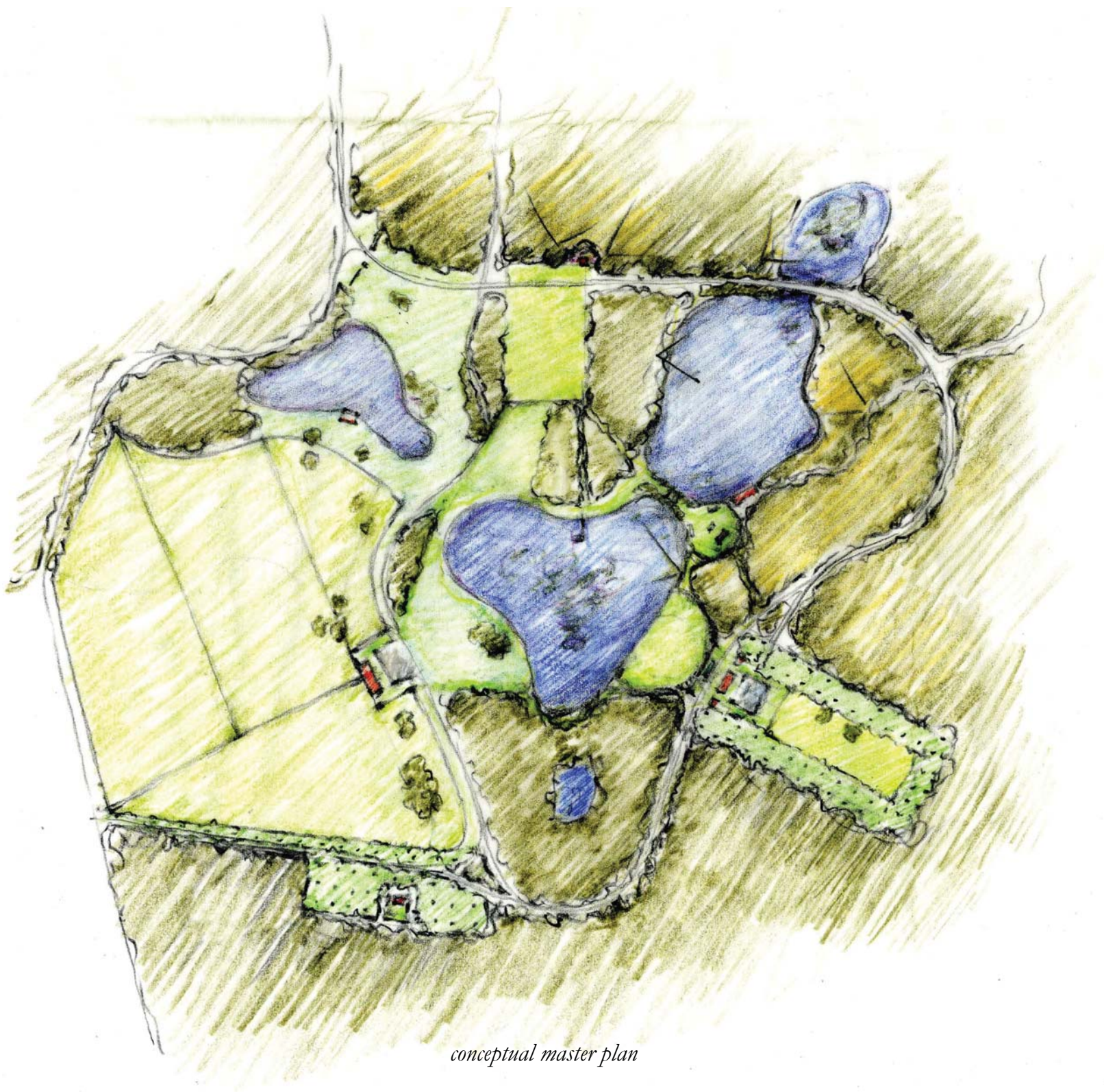
solar analysis of lodge site



initial circulation diagram



conceptual bubble diagram of program elements arranged around cypress ponds



conceptual master plan



THE BEGINNING

After the results from site investigations and analyses were recorded, which ultimately allowed the site (landform, solar orientation, water, vegetation, wildlife) to give clues as to how it is best revealed, the design team at Field Sport Concepts, working with Summerour Architects, synthesized the client’s desires and the site’s clues with sound design principles and creativity to produce a conceptual master plan.

Once the vision for Terra Chula was identified and a conceptual master plan established, Field Sport Concepts began to work closely with engineers, plantation managers, wildlife biologists, fencing, irrigation consultants and the client in leading the process of designing each of the programmatic elements.

The overarching vision of the property provides a framework and set of guiding principles and ideas from which every single element in the design takes direction. This ultimately gives the property an identity and cohesiveness between the individual elements that allows them to exist in harmony with one another and the larger landscape.

PROGRAM ELEMENTS

Lodge + Cottages.....10

Lodge Landscape.....12

Equestrian Facility.....14

Shooting Facility.....16

Spaces Between.....18

Entrance.....20

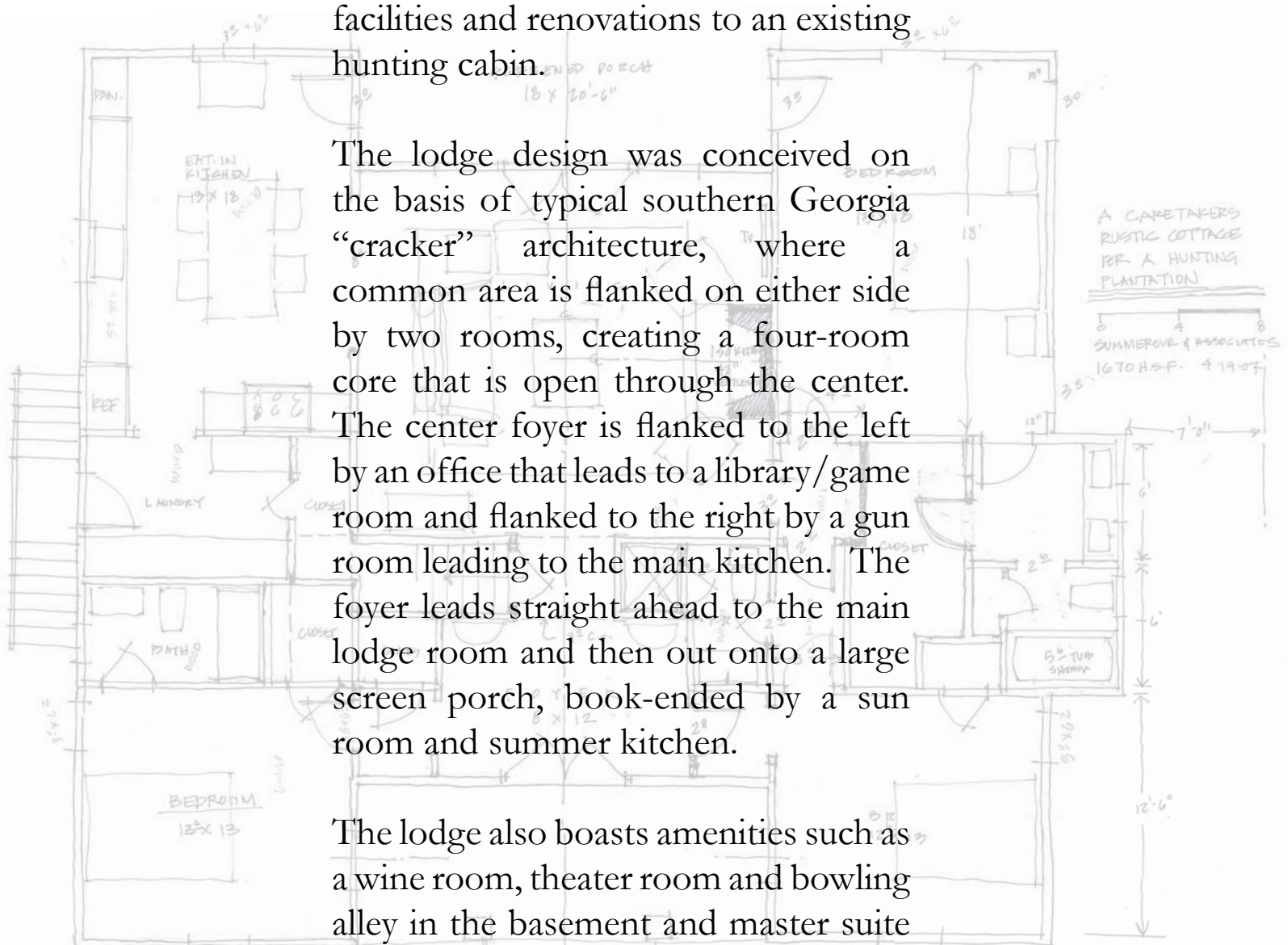
LODGE + COTTAGES

The office of Summerour and Associates was chosen to be the architect for Terra Chula. Their work included designing nearly all structures on site, ranging from the 7,000+ square foot lodge and manager's cottage to the shooting tower and stations, restroom facilities and renovations to an existing hunting cabin.

The lodge design was conceived on the basis of typical southern Georgia “cracker” architecture, where a common area is flanked on either side by two rooms, creating a four-room core that is open through the center. The center foyer is flanked to the left by an office that leads to a library/game room and flanked to the right by a gun room leading to the main kitchen. The foyer leads straight ahead to the main lodge room and then out onto a large screen porch, book-ended by a sun room and summer kitchen.

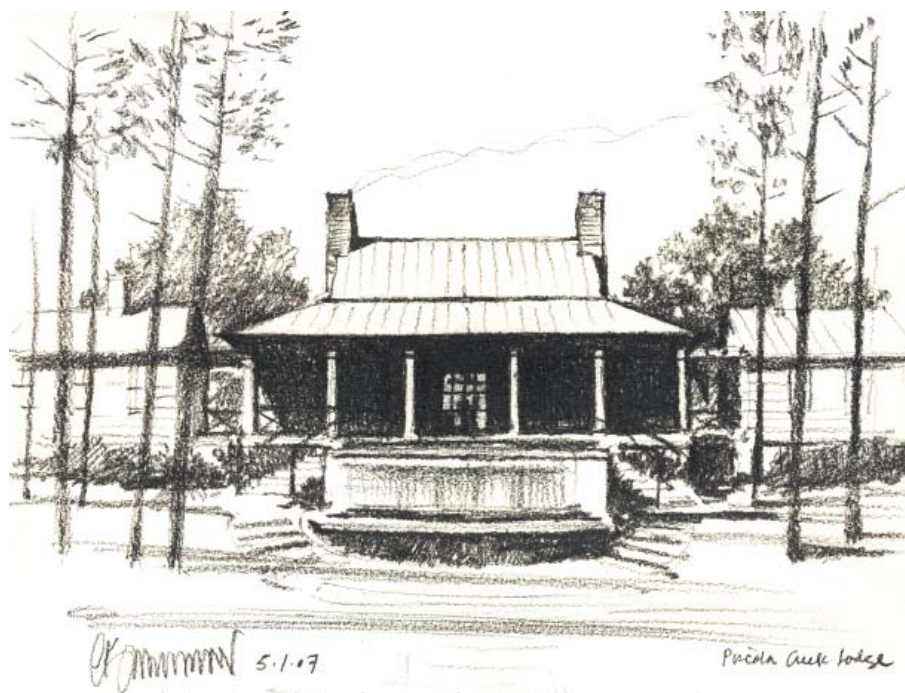
The lodge also boasts amenities such as a wine room, theater room and bowling alley in the basement and master suite on the second floor.

Guest cottages are positioned on either side of the main lodge and consist of four bedrooms, three baths, a kitchen and living/dining room. Their back porches connect to the main lodge providing a covered walk between buildings.

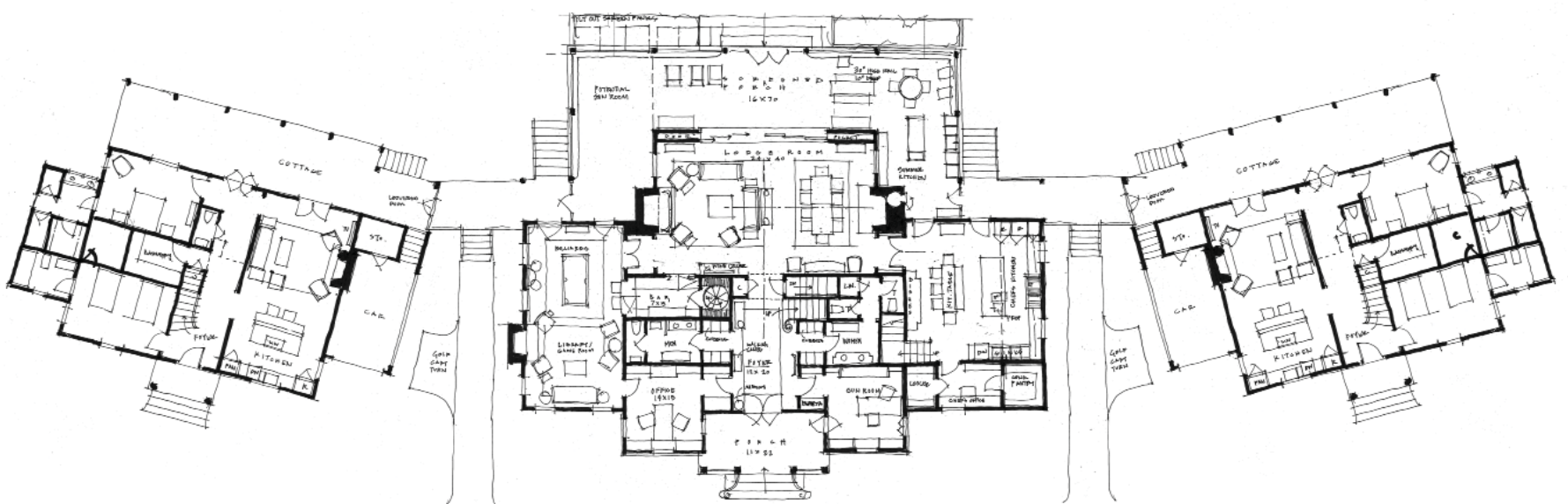




sketch of lodge front -- by Summerour Architects



sketch of lodge back -- by Summerour Architects



THE LODGE
PISCOLA CREEK PLANTATION

main floor plan -- by Summerour Architects

SUMMEROUR
ARCHITECTS

LODGE LANDSCAPE

A landscape of ascent and prospect, the lodge sits on a high point with commanding sunset views across the cypress ponds and equestrian paddocks. The landscape surrounding the lodge and cottages embraces the architecture while providing outdoor rooms suitable for entertainment, relaxation and play. Outdoor spaces are structured in response to the axial architecture of the lodge and defined by plant materials that are indigenous to southern Georgia.

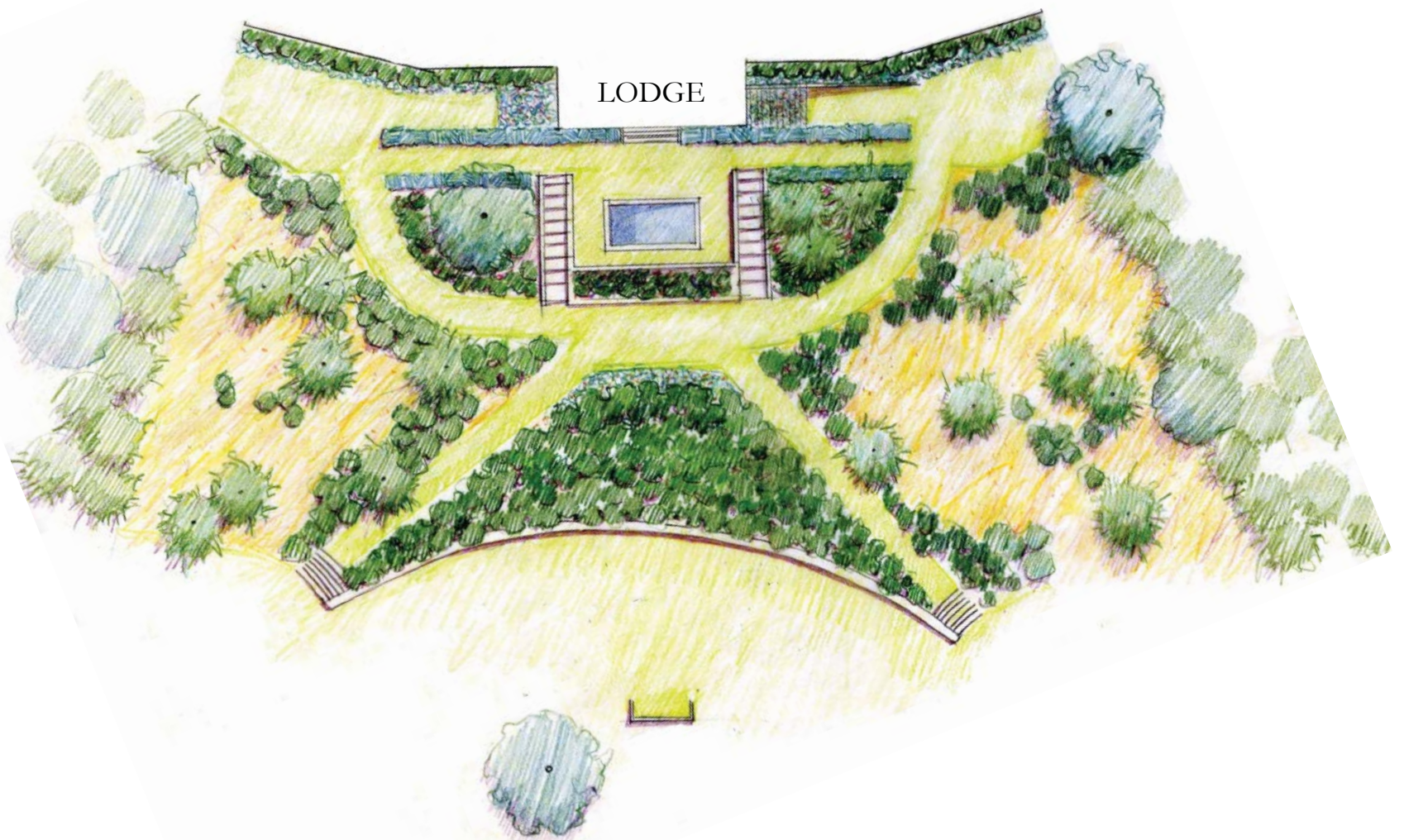
The front arrival court flanks a central lawn that can be used as a formal gathering space for events or hunts. Views extend to the southeast across a play lawn through an old pecan grove and open meadow to a backdrop of a mixed hardwood forest.

The pool terrace extends the elaborate interior detailing into the landscape providing a promontory from which to take in views of the sunset and contextual landscape.

Earthen ramps extend access down to the ponds and embed the lodge into the landscape when viewed from below.

The plant palette includes native hardwoods, such as live oaks and long leaf pines; native azaleas and viburnums; and native wiregrass and broomsedge.

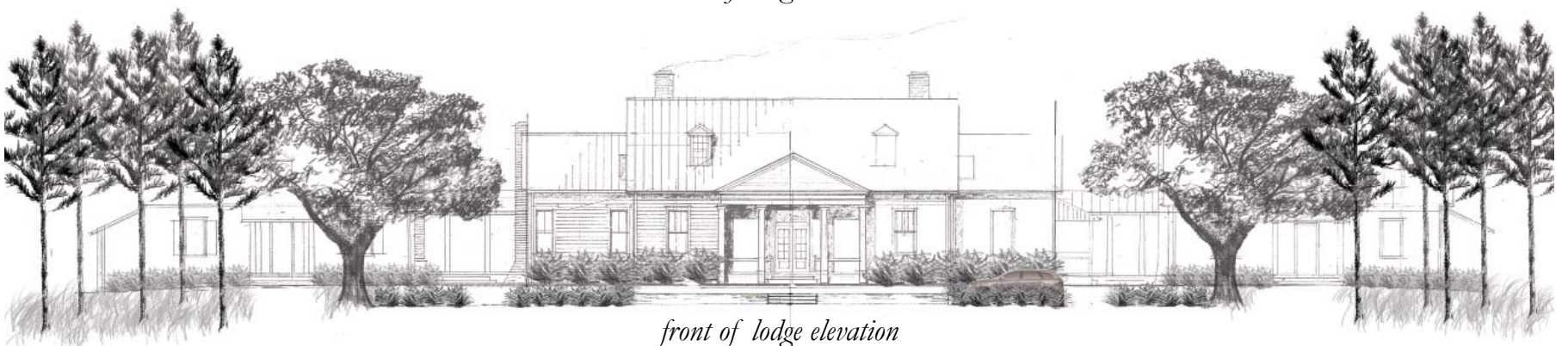
The mix of architecture, small walls and steps, terraces, paths and purposeful plantings are all structured together to create a place that possesses a simple beauty creating an immediate sense of permanence and elegance.



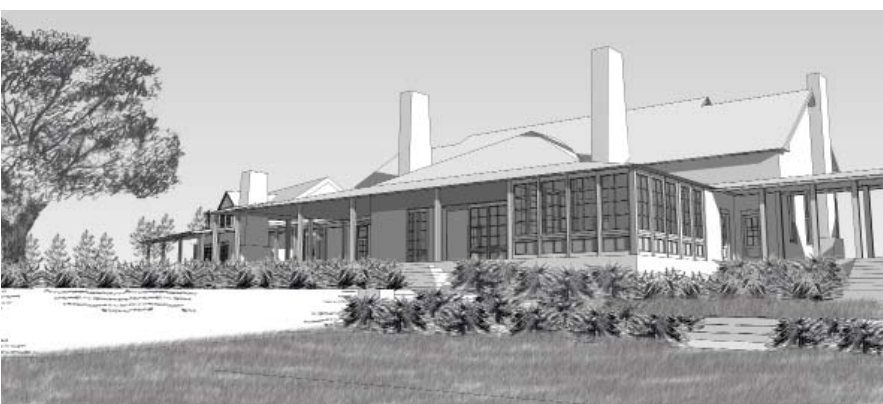
planting plan for back of lodge



back of lodge elevation



front of lodge elevation



back of lodge perspective



front of lodge perspective

EQUESTRIAN FACILITY

The equestrian facility is comprised of a 12-stall fully operational equestrian barn, nearly 40 acres of paddocks, regulation size riding ring, native pasture grasses, irrigation system and 4-board fencing. Equally as impressive as the facility itself is the landscape in which it is set. There is over 30 feet of topographic relief across the paddocks while the barn maintains a commanding view across the cypress ponds to both the lodge and shooting facility.





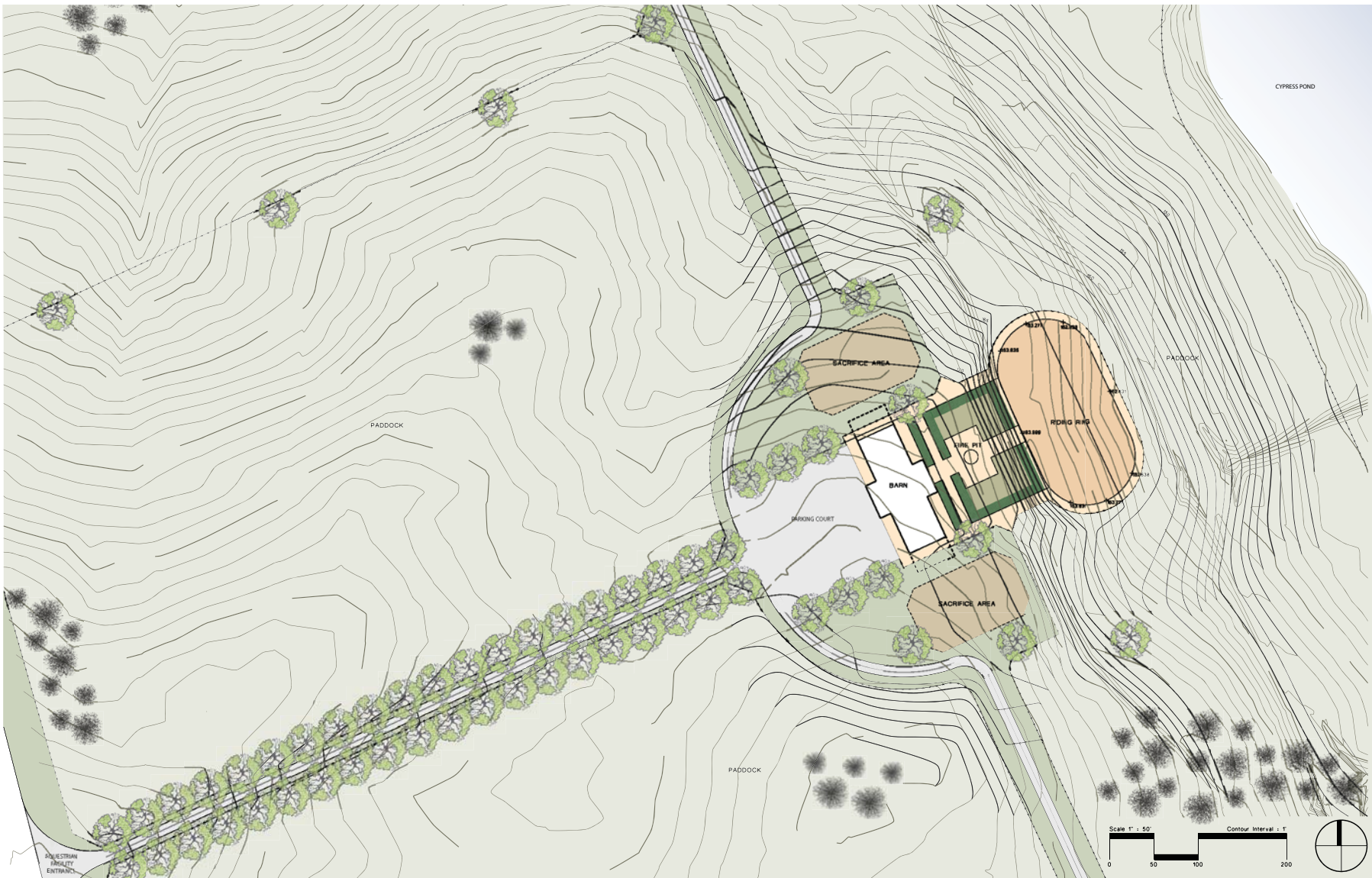
sunset view of constructed paddocks



model view of equestrian facility



master plan of equestrian facility + paddocks



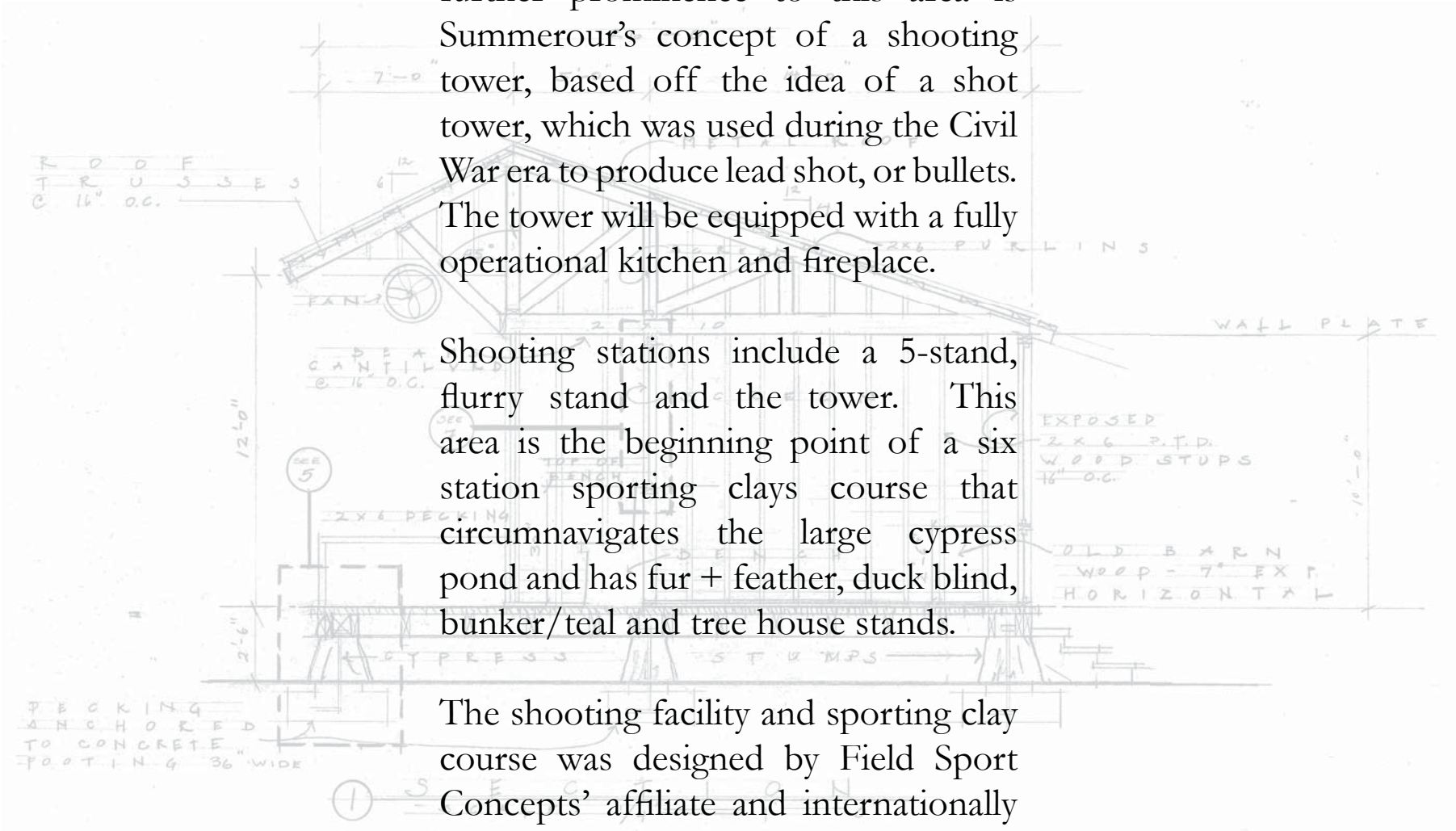
site plan of equestrian facility

SHOOTING FACILITY

The heart of the shooting facility is anchored by a specimen live oak at the edge of a slash pine stand. Giving further prominence to this area is Summerour's concept of a shooting tower, based off the idea of a shot tower, which was used during the Civil War era to produce lead shot, or bullets. The tower will be equipped with a fully operational kitchen and fireplace.

Shooting stations include a 5-stand, flurry stand and the tower. This area is the beginning point of a six station sporting clays course that circumnavigates the large cypress pond and has fur + feather, duck blind, bunker/teal and tree house stands.

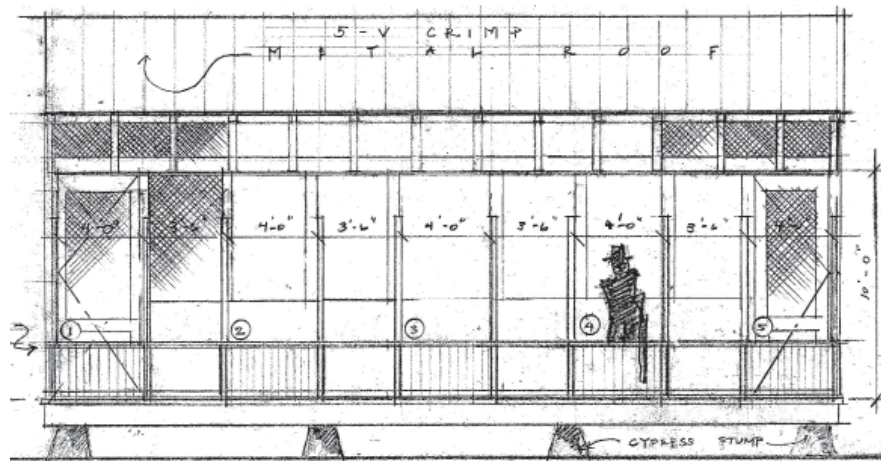
The shooting facility and sporting clay course was designed by Field Sport Concepts' affiliate and internationally renowned British shooting professional John Higgins of The British School of Shooting. Summerour + Associates was responsible for the building and structural designs of the stations.



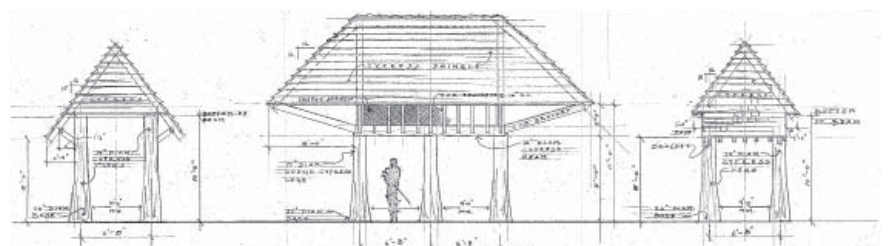


THE SHOT TOWER

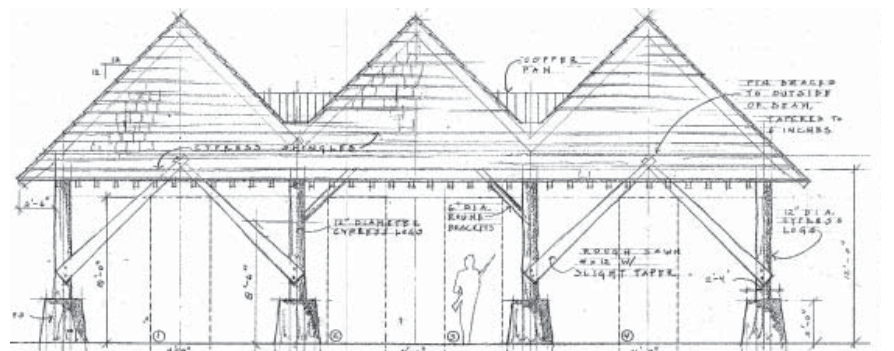
initial shooting tower sketch -- by Summerour Architects



flurry + 5-stand shooting pavillion -- by Summerour Architects



duck blind sporting clay stand -- by Summerour Architects



fur + feather sporting clay stand -- by Summerour Architects



elevation of shooting tower + facilities



constructed 5-stand + flurry shooting stands prior to tower construction

SPACES BETWEEN

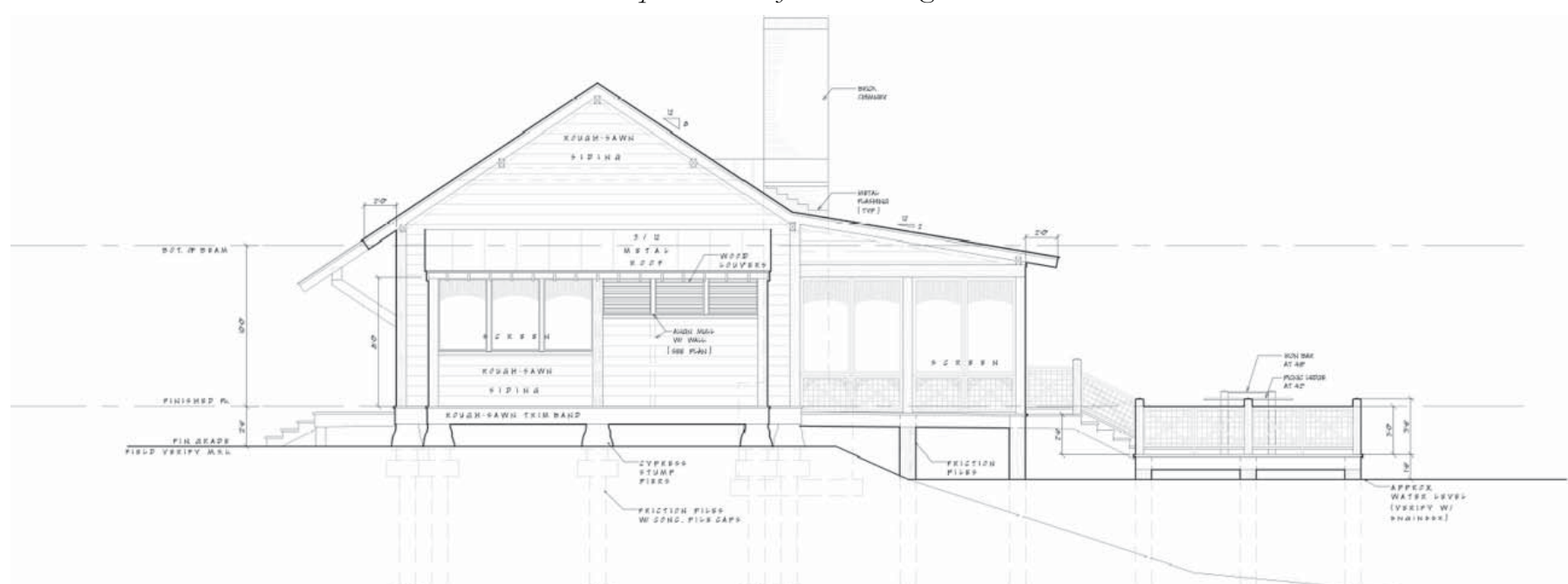
Spaces that connect programmatic elements help to tie the larger areas together and give the site an overall cohesiveness. These spaces can be as simple as a mown path through a meadow or a sub-destination along a route between major site elements. Regardless of their subtlety or extravagance, they complement the larger spaces they tie together and provide the user with multiple experiences that may not exist elsewhere on site.

At Terra Chula, these spaces exist in many forms, from a walk across the causeway between ponds to an open air dining pavilion complete with an oyster roast pit and boat dock, to an intimate pedestrian footbridge.

Some are active areas, others are passive and reflective. All are meant to be discovered and their enjoyment is left up to the imagination of the user.



looking down the pine alley along the causeway



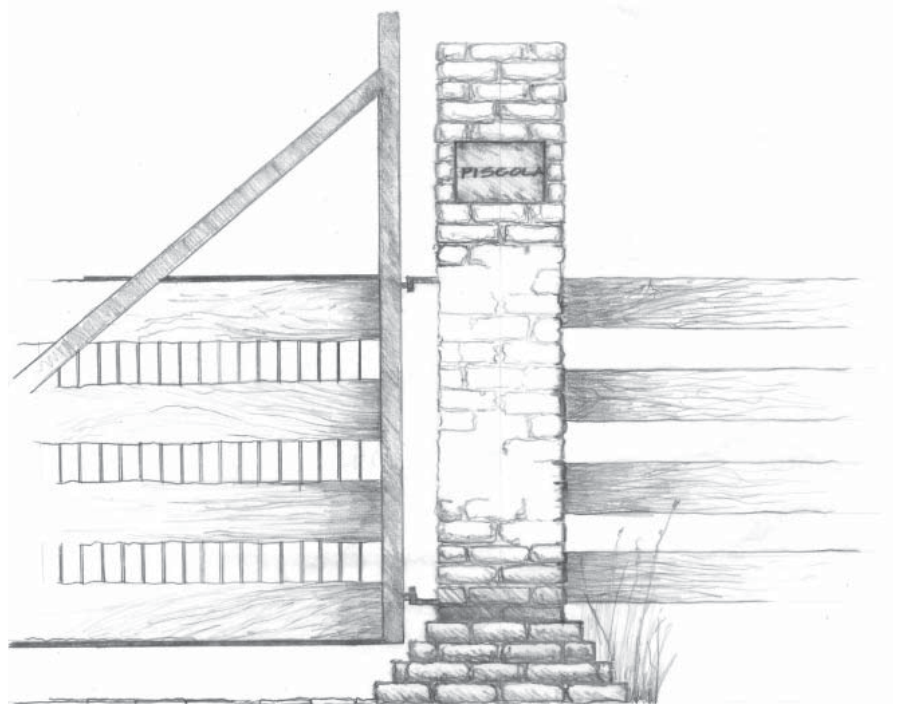
ENTRANCE

The main entrance to the plantation leads down an unassuming county road lined by mature live oaks whose branches stretch out to form a beautiful canopy. At a bend in the road, the entry drive exits left, overlooking an expansive pond in the foreground and the rolling terrain of the equestrian paddocks as the fence lines mimic the landform. The entry gate is set amidst a grove of towering live oaks, providing a sort of entry foyer to the plantation.

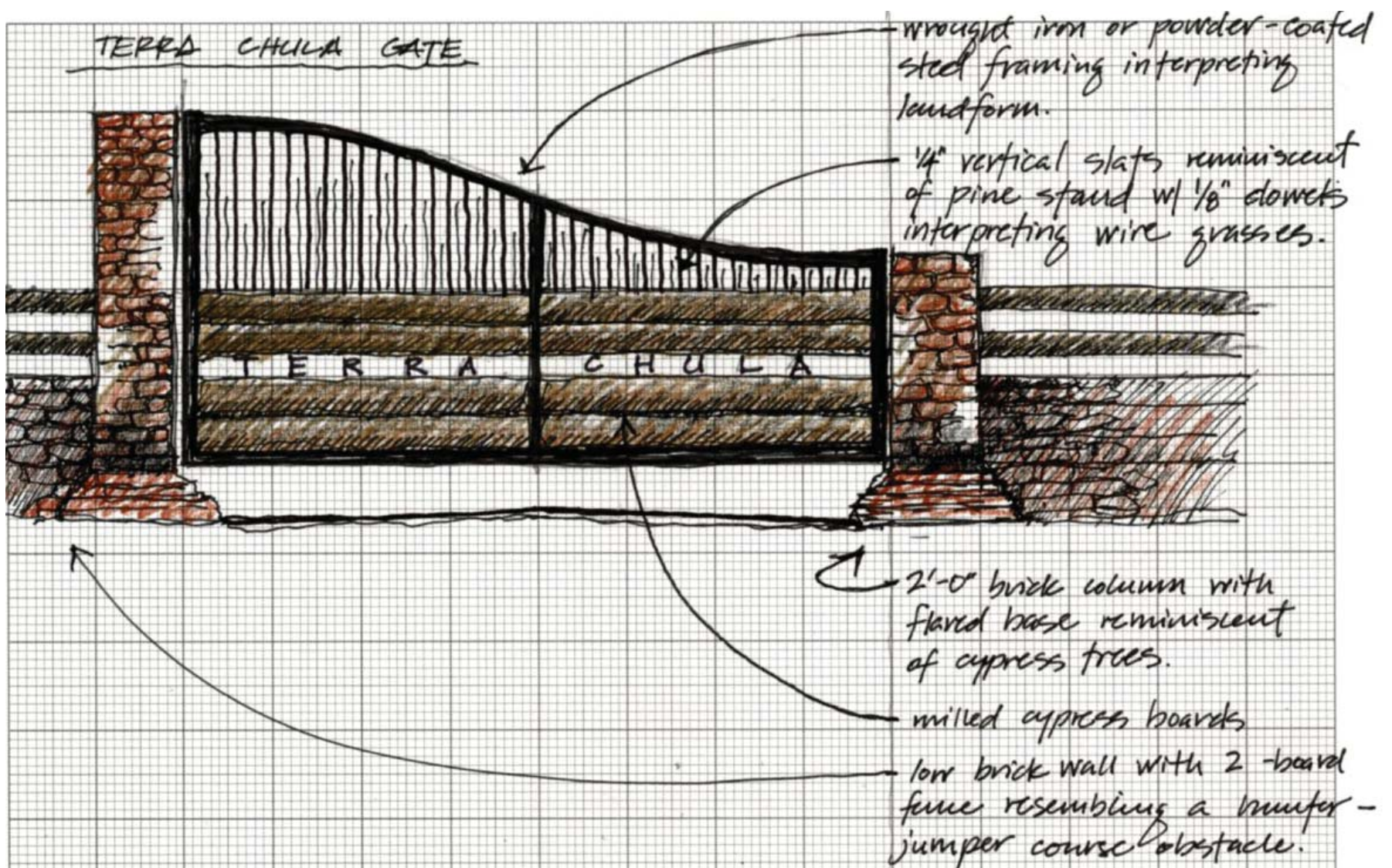
The entry gate is designed in response to the physical attributes of the plantation. The roll along gate top speaks to the rolling, undulating landform. Vertical supports imitate the stands of pine and wiregrass. Rough-sawn cypress boards create the nameplate for the entrance. Adding a playful element to the gate, the turkey and quail from the plantation's logo seem to emerge from the "pine stand" of vertical supports.



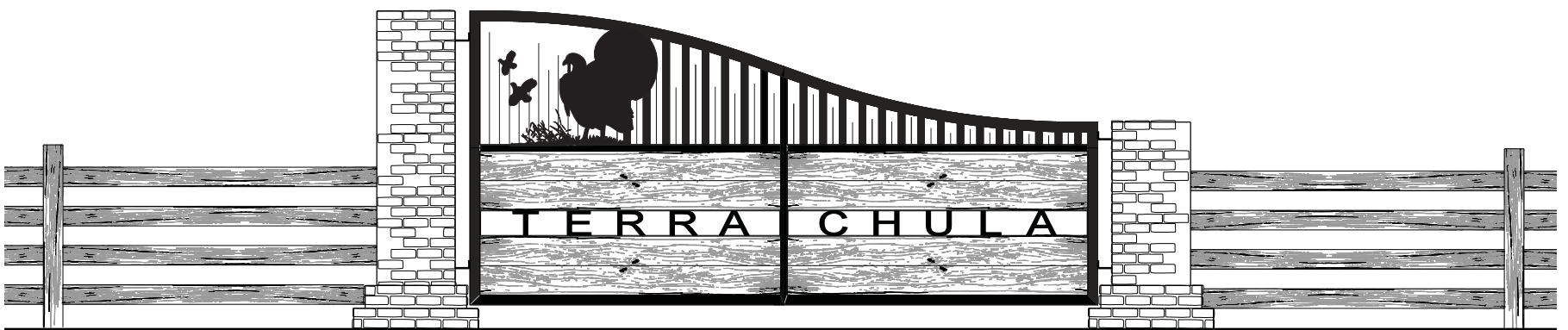
sketch of entrance character



sketch of entry gate + column

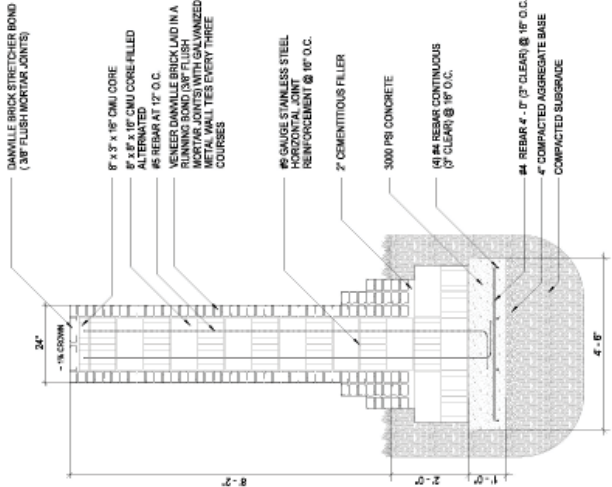


initial diagram of entry gate

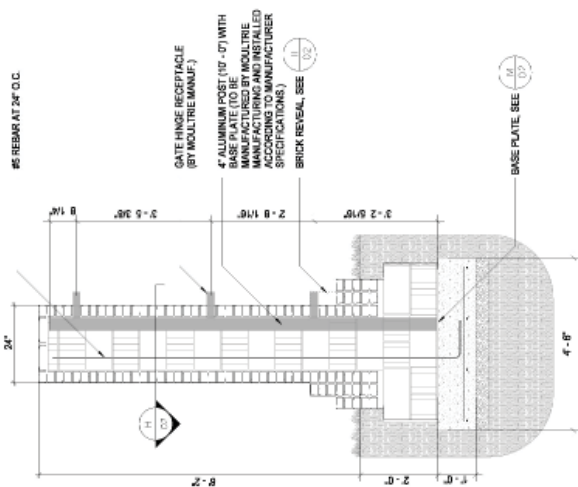


elevation of entry gate

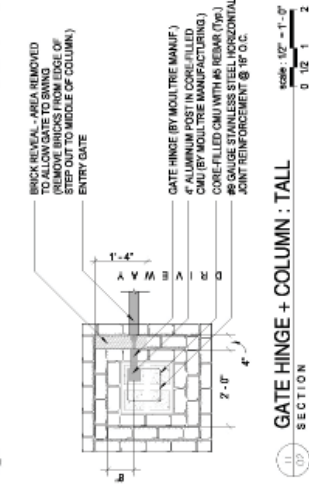




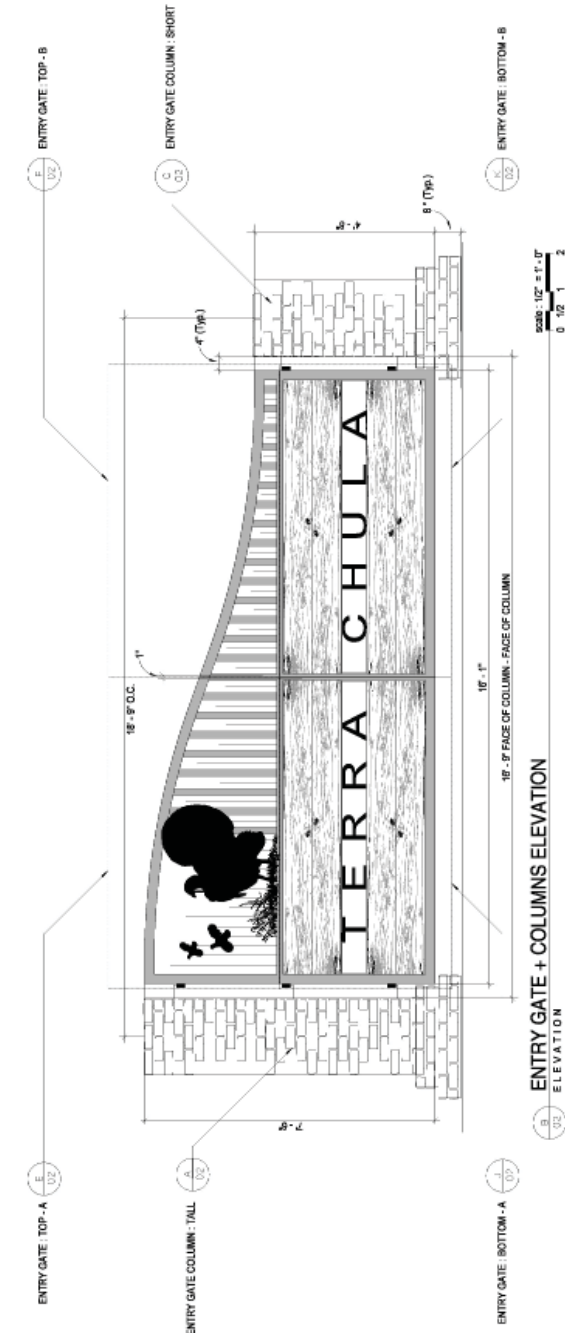
ENTRY GATE COLUMN : TALL
SECTION
Scale: 1/2" = 1'-0"
0 1/2 1 2



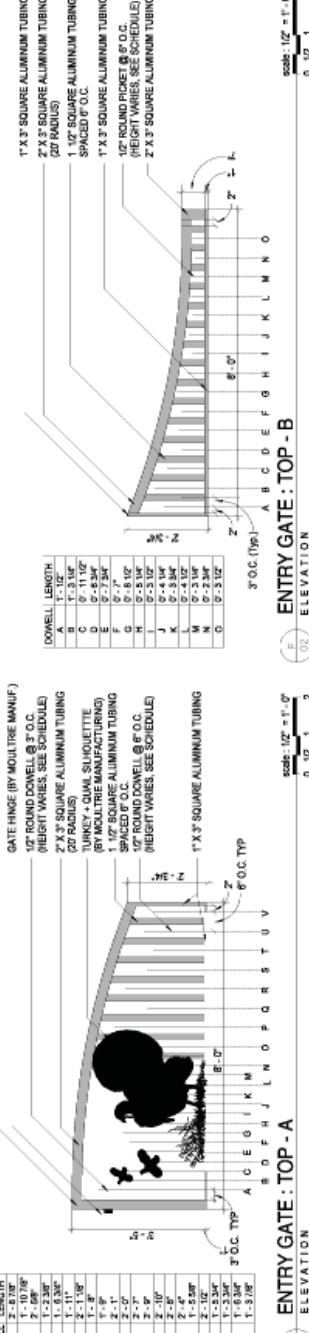
GATE HINGE : TALL
SECTION
Scale: 1/2" = 1'-0"
0 1/2 1 2



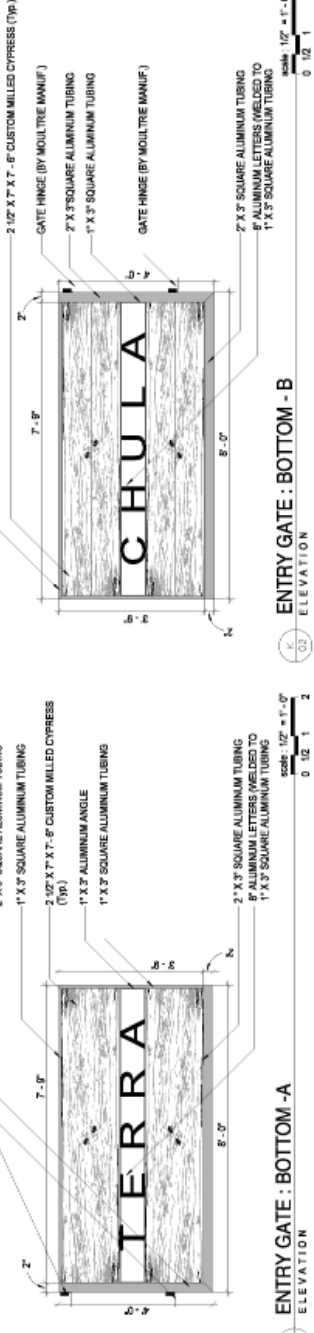
GATE HINGE + COLUMN : TALL
SECTION
Scale: 1/2" = 1'-0"
0 1/2 1 2



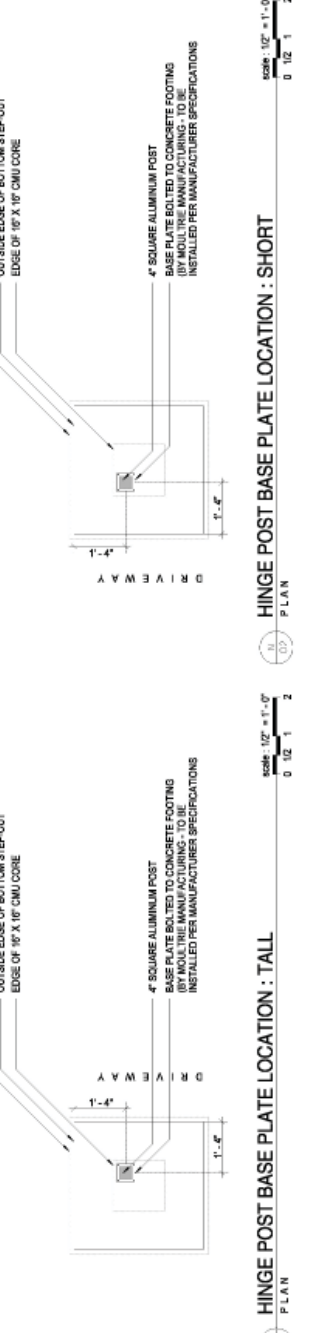
ENTRY GATE + COLUMNS ELEVATION
ELEVATION
Scale: 1/2" = 1'-0"
0 1/2 1 2



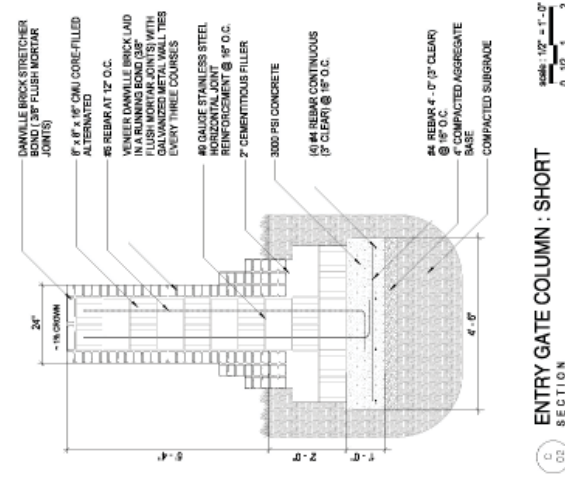
ENTRY GATE : TOP - A
ELEVATION
Scale: 1/2" = 1'-0"
0 1/2 1 2



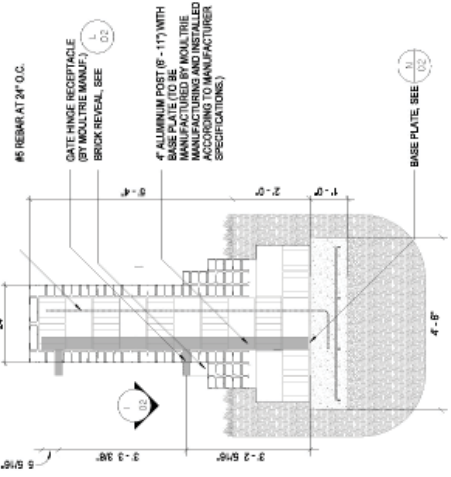
ENTRY GATE : BOTTOM - A
ELEVATION
Scale: 1/2" = 1'-0"
0 1/2 1 2



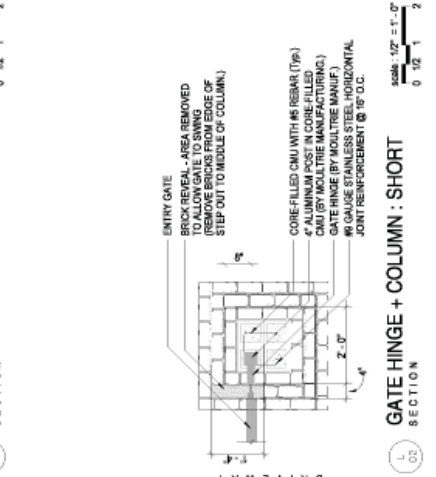
HINGE POST BASE PLATE LOCATION : TALL
PLAN
Scale: 1/2" = 1'-0"
0 1/2 1 2



ENTRY GATE COLUMN : SHORT
SECTION
Scale: 1/2" = 1'-0"
0 1/2 1 2



GATE HINGE : SHORT
SECTION
Scale: 1/2" = 1'-0"
0 1/2 1 2



GATE HINGE + COLUMN : SHORT
SECTION
Scale: 1/2" = 1'-0"
0 1/2 1 2

NOTES:
1. USE TYPE S MORTAR PER ASTM C270 AND COARSE GROUT PER ASTM C678.
2. BLOCK STRENGTH SHALL BE AT LEAST 1500 PSI.
3. ALL REINFORCEMENT SHALL CONFORM TO ASTM A615-60.



THE TEAM:



Land Planning + Landscape Architecture:

McKee Carson

Sporting Clays Course Designer:

John Higgins

The British School of Shooting

Other Consultants:

Architecture:

Keith Summerour

Ryan Duffey

Brian Coody

Summerour and Associates

Plantation Managers:

Hunter Royal

Jason Golden

Wildlife Biologist:

Brad Mueller

Civil / Environmental Engineer:

Jeffery Lovell

Lovell Engineering Associates, PC

Irrigation Specialist:

Vance Hiers

United Irrigation Supply, Inc.

Fencing Specialist:

Thomas Sims

Sims Fence Company

Gate Manufacturer:

Ronnie Wilkes

Moultrie Manufacturing Company

Construction Supervisor:

Mike Anderson



copyright © 2008

Field Sport

C O N C E P T S L T D™

www.fieldsport.com