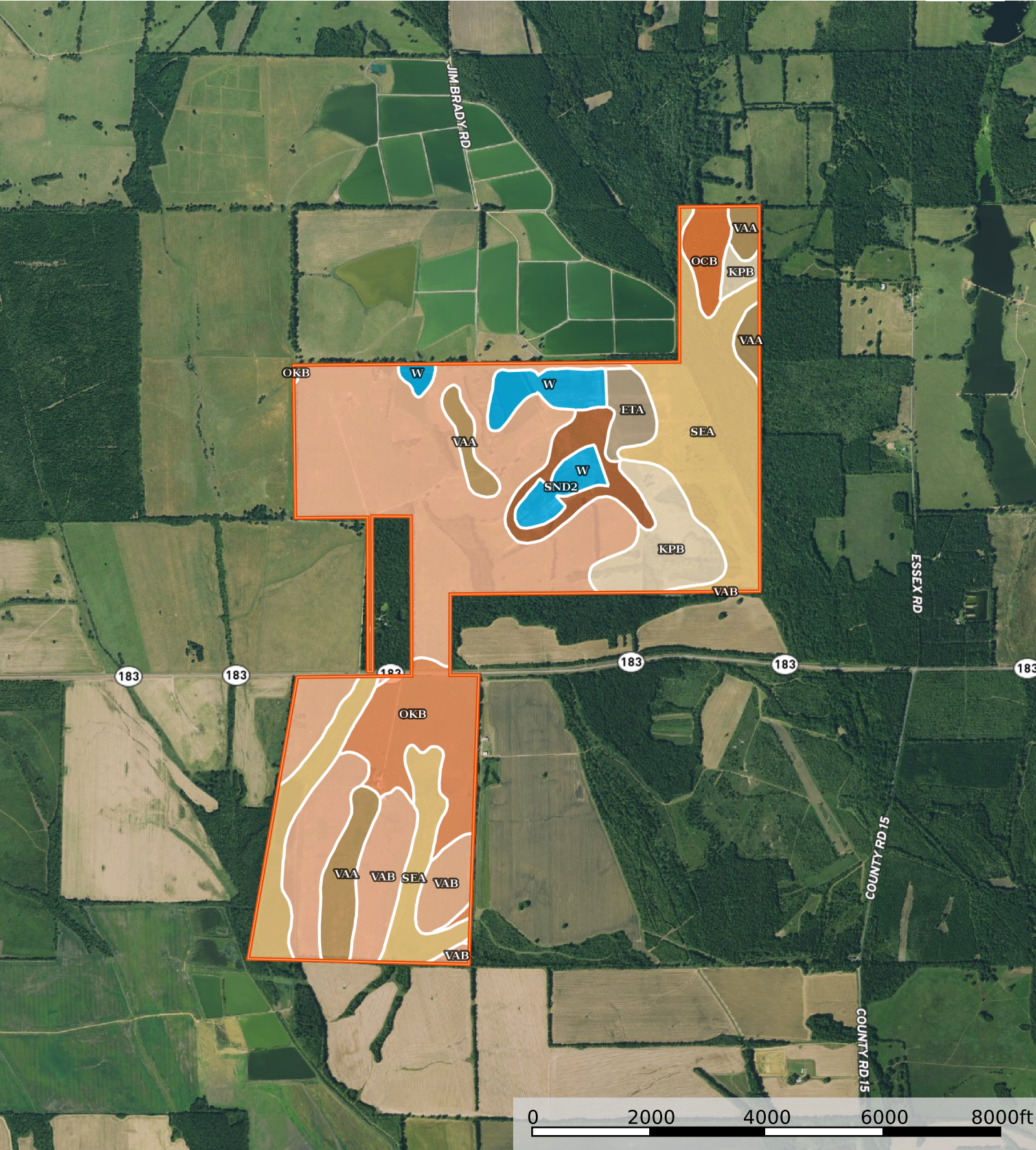



Otto Ullrich -Perry Co - Master  
Alabama, AC +/-



 Boundary



## Boundary 1156.25 ac

SOIL CODE	SOIL DESCRIPTION	ACRES	%	CPI	NCCPI	CAP
VaB	Vaiden clay, 1 to 3 percent slopes	503.88	43.58	0	52	3e
SeA	Sucarnoochee silty clay, 0 to 2 percent slopes, frequently flooded	263.22	22.76	0	53	4w
OkB	Okolona silty clay loam, 0 to 3 percent slopes	97.55	8.44	0	64	2e
KpB	Kipling clay loam, 1 to 5 percent slopes	72.56	6.28	0	67	3e
VaA	Vaiden clay, 0 to 1 percent slopes	70.54	6.1	0	54	3w
W	Water	58.76	5.08	0	-	-
SnD2	Sumter silty clay loam, 3 to 8 percent slopes, moderately eroded	41.98	3.63	0	42	4e
OcB	Ocilla-Jedburg complex, 1 to 3 percent slopes	24.7	2.14	0	60	2w
EtA	Eutaw clay, 0 to 1 percent slopes	23.06	1.99	0	54	3w
TOTALS		1156.25(*)	100%	-	51.51	3.17

(\*) Total acres may differ in the second decimal compared to the sum of each acreage soil. This is due to a round error because we only show the acres of each soil with two decimal.

### Capability Legend

Increased Limitations and Hazards

Decreased Adaptability and Freedom of Choice Users

Land, Capability

	1	2	3	4	5	6	7	8
'Wild Life'	•	•	•	•	•	•	•	•
Forestry	•	•	•	•	•	•	•	
Limited	•	•	•	•	•	•	•	
Moderate	•	•	•	•	•	•		
Intense	•	•	•	•	•			
Limited	•	•	•	•				
Moderate	•	•	•					
Intense	•	•						
Very Intense	•							

### Grazing Cultivation

(c) climatic limitations (e) susceptibility to erosion

(s) soil limitations within the rooting zone (w) excess of water