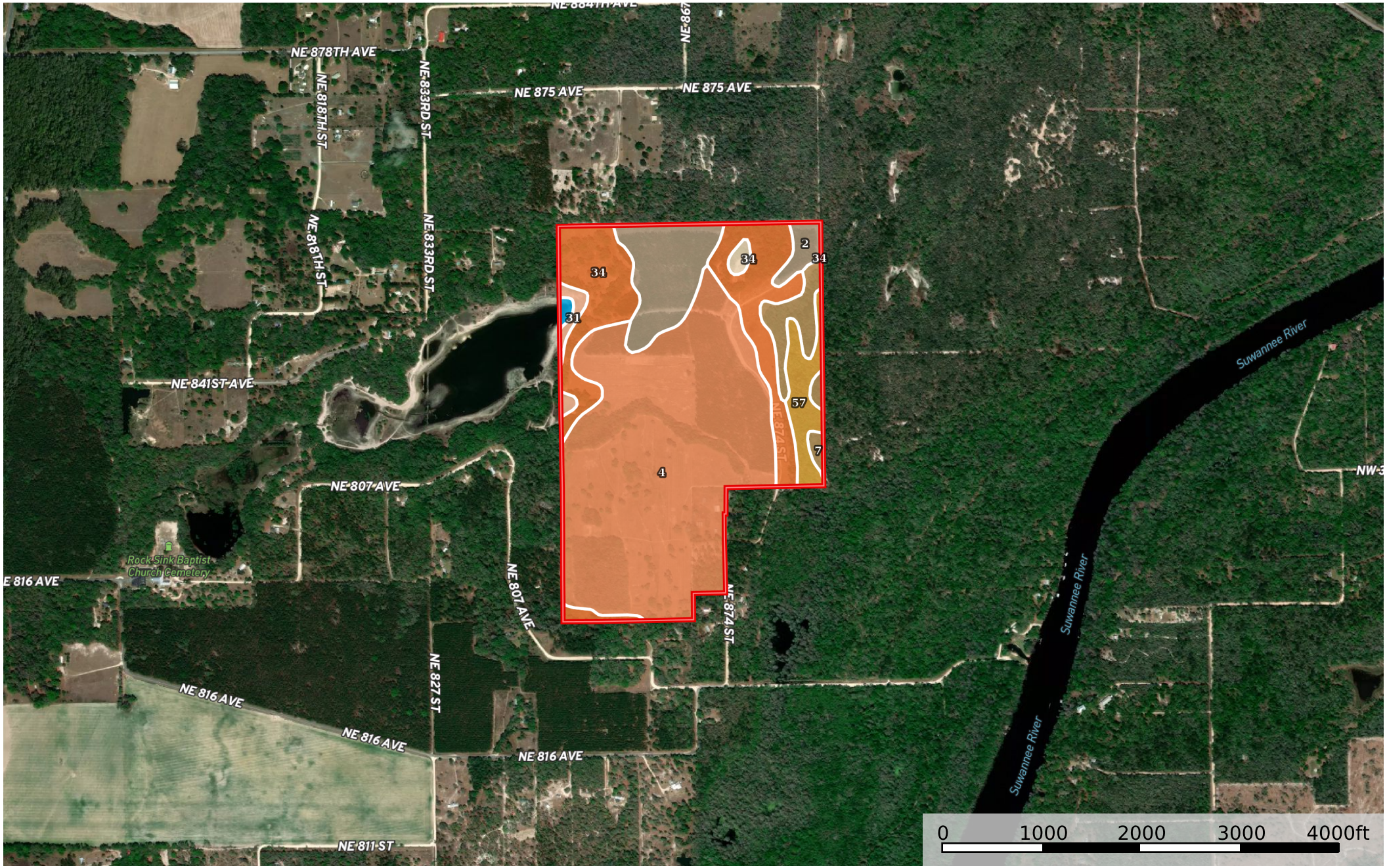


# Gornto Springs Whitetails

Florida, AC +/-



 Boundary

|  Boundary 209.21 ac

SOIL CODE	SOIL DESCRIPTION	ACRES	%	CPI	NCCPI	CAP
4	Penney-Otela, limestone substratum complex, 0 to 5 percent slopes	121.43	58.04	0	24	4s
34	Ortega-Blanton complex, 0 to 5 percent slopes	41.31	19.74	0	31	3s
2	Penney fine sand, 0 to 5 percent slopes	22.7	10.85	0	16	4s
57	Clara-Oldtown complex, frequently flooded	9.64	4.61	0	15	6w
7	Garcon-Ousley-Albany complex, occasionally flooded	9.54	4.56	0	38	2w
31	Clara sand, occasionally ponded	2.55	1.22	0	15	6w
12	Clara, Oldtown, and Meadowbrook soils, depressional	1.25	0.6	0	11	6w
99	Water	0.79	0.38	0	-	-
TOTALS		209.21(*)	100%	-	24.46	3.84

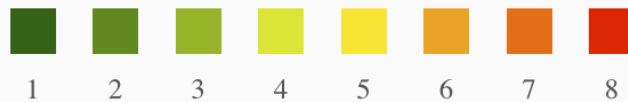
(\*) Total acres may differ in the second decimal compared to the sum of each acreage soil. This is due to a round error because we only show the acres of each soil with two decimal.

### Capability Legend

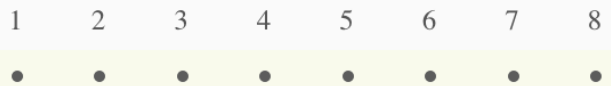
Increased Limitations and Hazards

Decreased Adaptability and Freedom of Choice Users

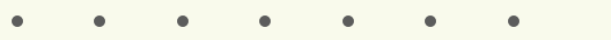
Land, Capability



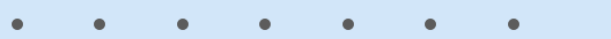
'Wild Life'



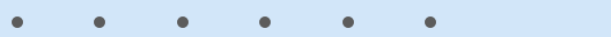
Forestry



Limited



Moderate



Intense



Limited



Moderate



Intense



Very Intense



### Grazing Cultivation

(c) climatic limitations (e) susceptibility to erosion

(s) soil limitations within the rooting zone (w) excess of water