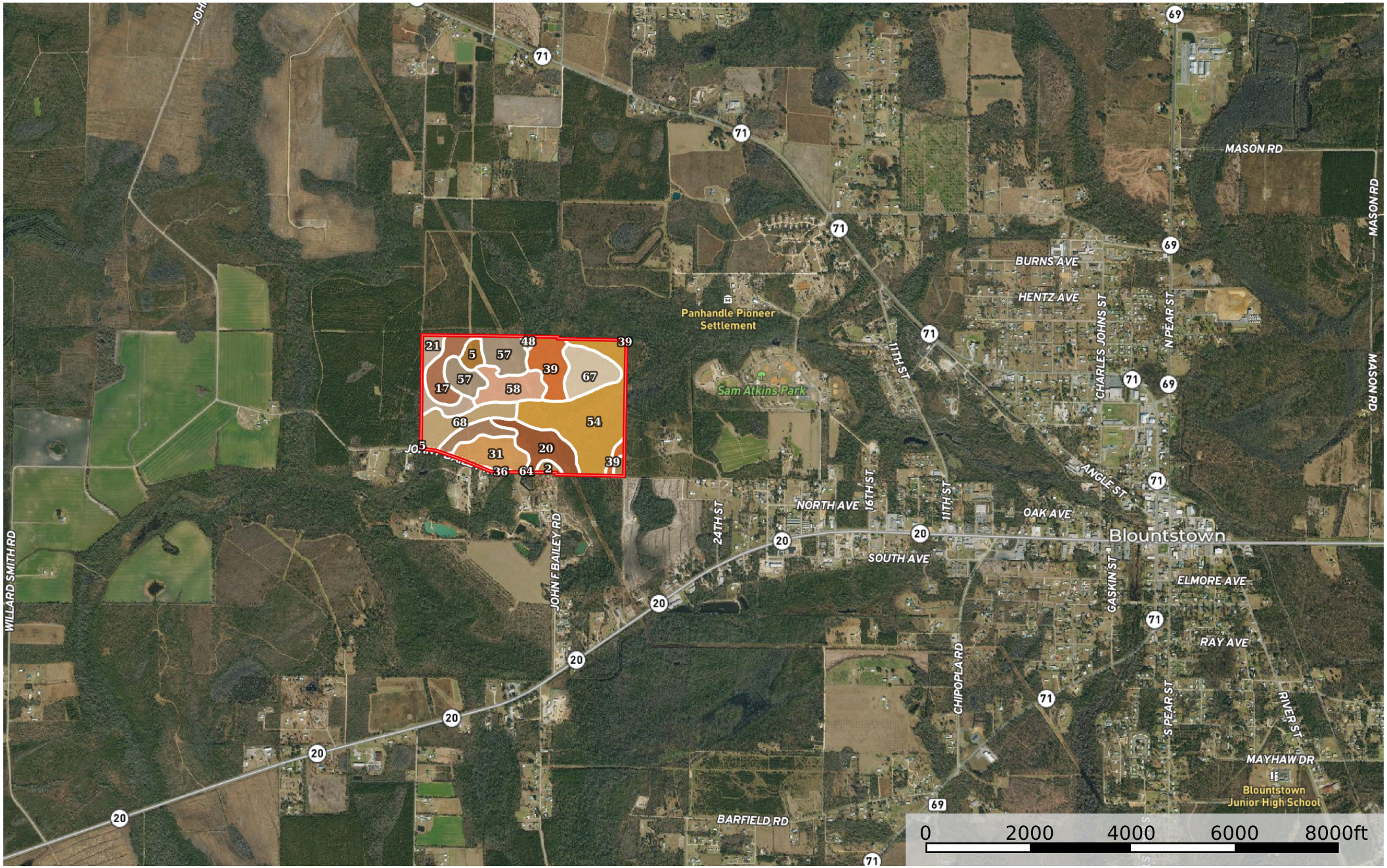


Lynniam - Creek Ridge

Florida, AC +/-



Boundary

|  Boundary 231.78 ac

SOIL CODE	SOIL DESCRIPTION	ACRES	%	CPI	NCCPI	CAP
54	Croatan, Surrency, and Pantego soils, depressional	56.9	24.55	0	16	7w
57	Stilson loamy sand, 0 to 2 percent slopes	22.65	9.77	0	33	2w
39	Leefield loamy sand, 0 to 5 percent slopes	19.19	8.28	0	35	2w
20	Dorovan-Pamlico-Rutlege association, depressional	19.08	8.23	0	17	7w
67	Alapaha loamy sand, 0 to 2 percent slopes	18.02	7.77	0	42	5w
68	Croatan, Kinston, and Surrency soils, frequently flooded	17.39	7.5	0	17	7w
31	Foxworth sand, 0 to 5 percent slopes	16.92	7.3	0	29	3s
58	Stilson loamy sand, 2 to 5 percent slopes	16.76	7.23	0	34	2s
17	Floralia loamy sand, 0 to 2 percent slopes	13.45	5.8	0	47	2w
21	Dothan sandy loam, 0 to 2 percent slopes	11.82	5.1	0	54	1
12	Chipley sand, 0 to 5 percent slopes	8.99	3.88	0	25	3s
5	Robertsdale fine sandy loam	5.08	2.19	0	57	3w
2	Albany loamy sand, 0 to 5 percent slopes	3.62	1.56	0	21	3w
48	Pansey sandy loam	1.05	0.45	0	57	4w
36	Lakeland sand, 0 to 5 percent slopes	0.69	0.3	0	19	3s
64	Pamlico, Bibb, and Rutlege soils, frequently flooded	0.17	0.07	0	15	7w
TOTALS		231.78(*)	100%	-	28.92	4.36









(*) Total acres may differ in the second decimal compared to the sum of each acreage soil. This is due to a round error because we only show the acres of each soil with two decimal.

Capability Legend

Increased Limitations and Hazards

Decreased Adaptability and Freedom of Choice Users

Land, Capability

								
	1	2	3	4	5	6	7	8
'Wild Life'	•	•	•	•	•	•	•	•
Forestry	•	•	•	•	•	•	•	
Limited	•	•	•	•	•	•	•	
Moderate	•	•	•	•	•	•		
Intense	•	•	•	•	•			
Limited	•	•	•	•				
Moderate	•	•	•					
Intense	•	•						
Very Intense	•							

Grazing Cultivation

(c) climatic limitations (e) susceptibility to erosion

(s) soil limitations within the rooting zone (w) excess of water